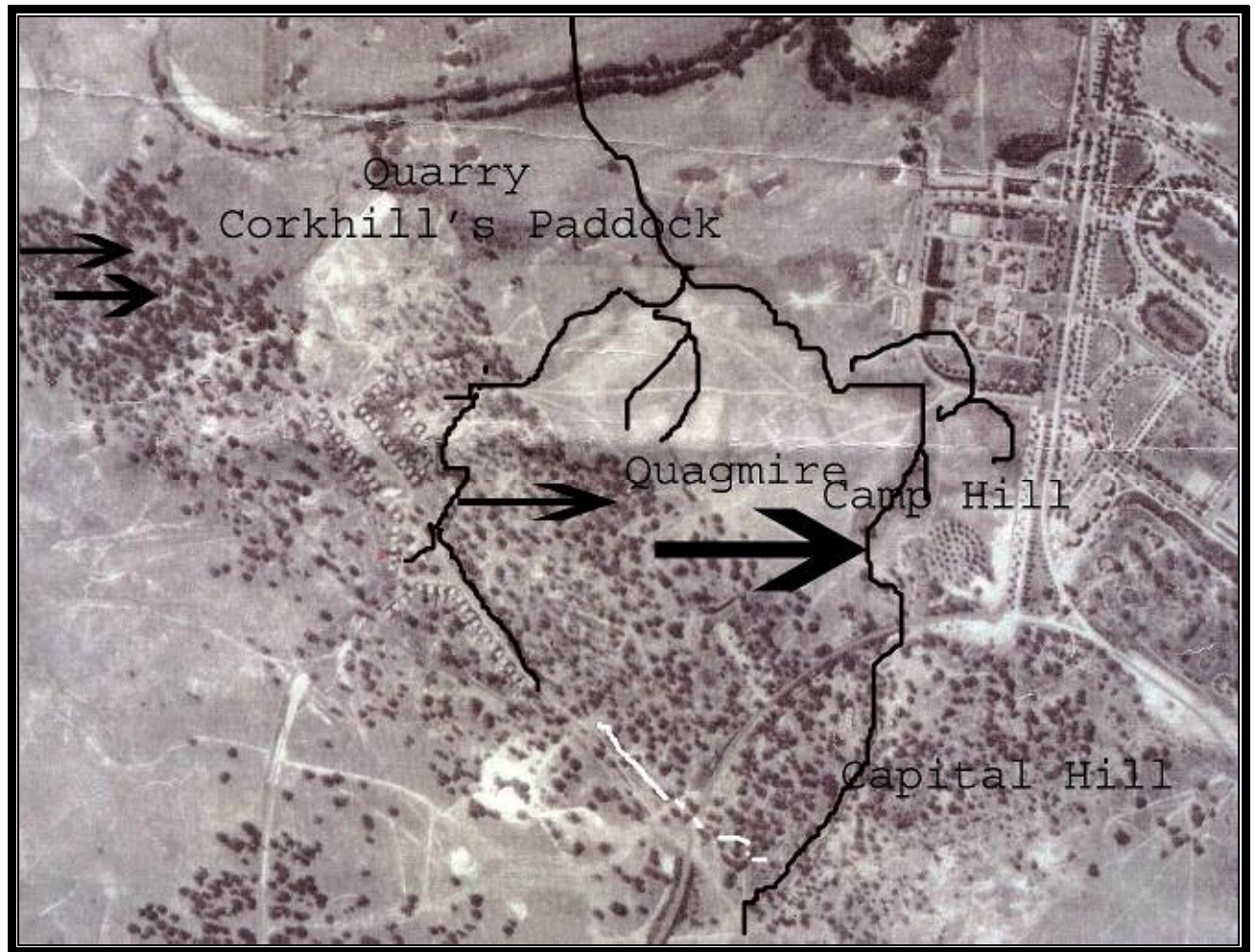
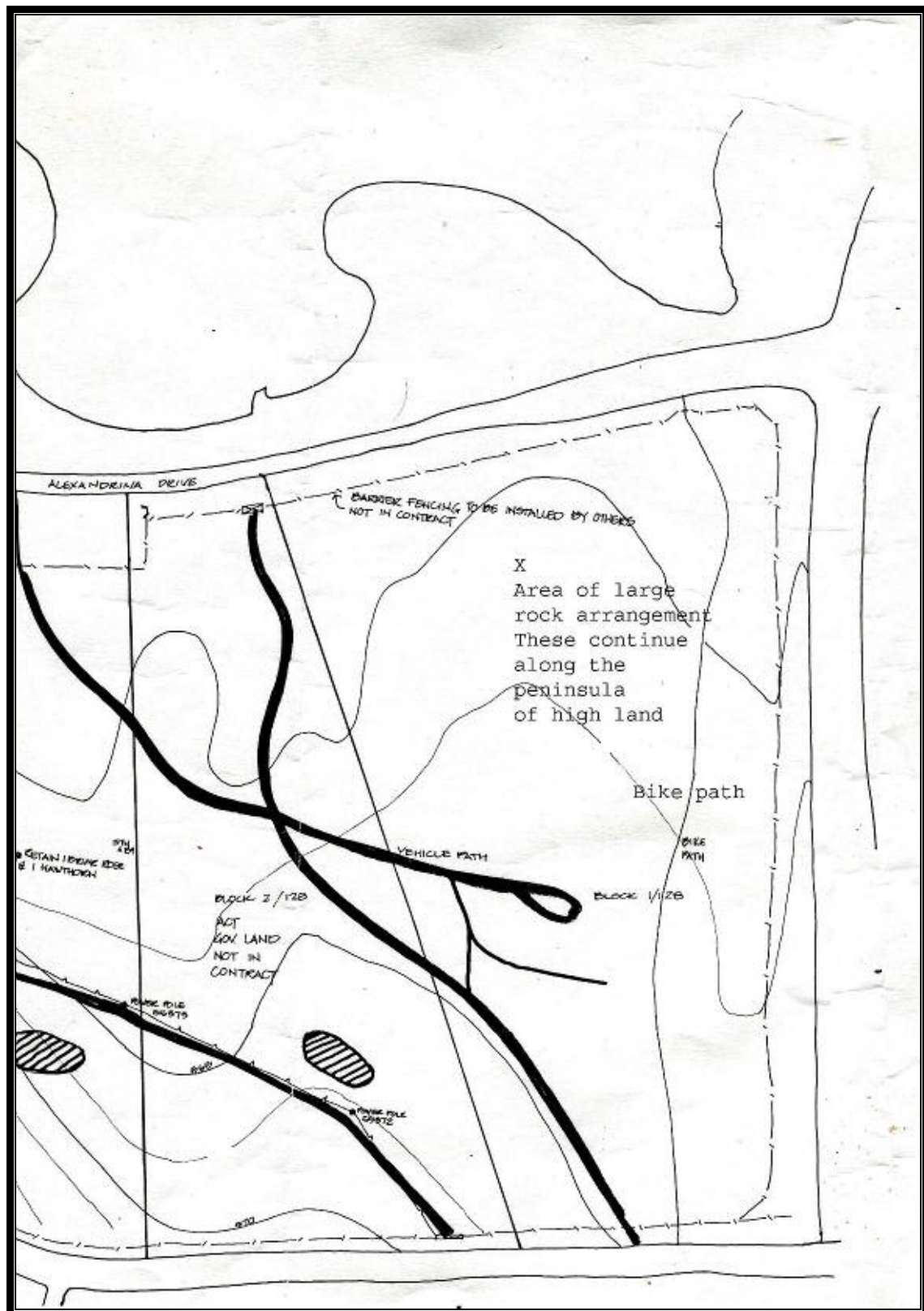


STIRLING PARK, SECTION 1 of 128

According to the Canberra maps the area – section one – now designated by the NCA for diplomatic use is part of Stirling Park. A citation for the parkland (National Trust ACT branch) included this land in the citation. Not recorded in this citation are the rock arrangements and trees in the area. The land was not walked at the time the citation was written.





BACKGROUND.

I returned from a month's holiday on 11th September 2004. The following day I took a walk in the area that butts on to Flynn Drive, Forster Crescent and Alexandrina Drive. The majority of the trees in this section where the rock arrangements are found have been marked with fluorescent orange dots. The survey markers have also been recently sprayed with the same paint.

Upon returning home I commenced trying to find out who was responsible for the work. I phoned both NCA and ACT sections of Land & Planning etc etc and could not get an answer.

On Monday night I received a phone call from Mrs Ruth Bell who told me that Stirling Ridge was designated for development. She and her son Wally Bell were to meet Lindsay Smith (Archaeologist) at the site the following day. The site turns out to be the section near Flynn Drive with the trees marked with the orange paint.

I met with Mrs Bell, Wally Bell, Lindsay Smith and Aboriginal man, Lex at the site around mid day on Tuesday 15th September. I offered to show the rock arrangements in the vicinity of this section. When we got over to the large arrangement it was discovered that some of the rocks had been removed. Similarly the other major arrangements had rocks removed. One small bottle used in one of the four such arrangements has had the glass bottle dug out from the ground and examined. It was put back but stones from near it have been removed.

Two small empty beer bottles were placed near the big arrangement and form part of an arrow pointing to the site.

Upon investigation of the site and the other rock arrangements in the area it is apparent that only the area that is to be developed has rocks etc vandalised. Some stones were found and replaced by me. The majority of the stones are missing. Signs of a vehicle tyre marks are found in the area. It is presumed that the rocks may have been carried out from the site in such a vehicle.

I also noted that a small mound in the area that had a rock at either end (east west arrangement) had both rocks missing.

The fact that the rocks had recently been removed was noted by Mr Smith and the others in the group. [Discussion with John Bruggeman indicate that in mid September the rocks were still in place.]



Above is a detail of the western end of the big arrangement. The line of rocks on the right have rocks removed.













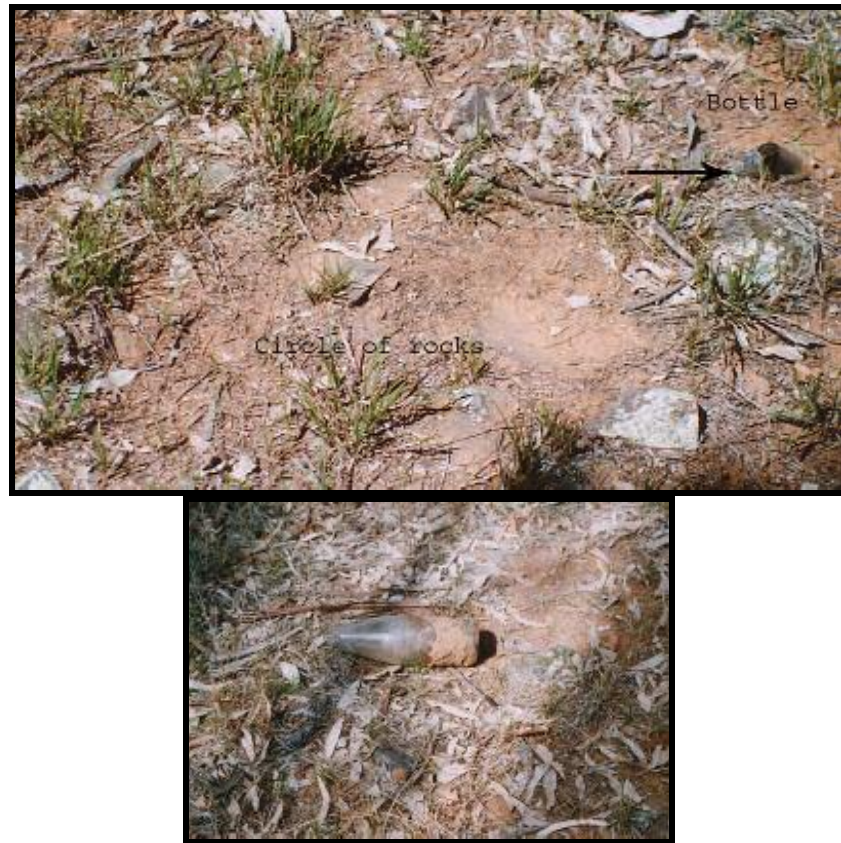
The beer bottle in the above photograph is one of two placed near the big arrangement. They are *NEW*. Below is a photograph showing the big circle with small circle and undulating line. One of the rocks has been removed from the circle.



Big circle with smaller circle and undulating line. The circle shown on the right has stones taken from it.







This bottle was removed from its bedding shortly after sending the e-mail re this bottle and another one (shown below) to the NCA, Heritage Department and National Trust. Upon inspection of one of the other bottles set into the ground (Friday 17th September) it was discovered that another had also been dug out of its earth case and examined.



The above right bottle has been removed from its bed and several of the rocks belonging to the arrangement have been removed. At time of writing the above left jar has not been checked.



BEFORE & AFTER







Above – jar in 2003 and on the right a photograph taken on 15th September 2004. The jar appears not to have been removed from its bed.



The two rocks shown above that mark either end of a small mound have also been removed from the area. Next photograph shows the same area taken 15th September 2004. Rocks are missing.



Others vandalized















The next photograph shows vehicle tracks into the area. They come from Forster Crescent opposite the gate to the rear of Lord Casey's red brick house. This area is ACT land and is not fenced.

