

## STIRLING PARK DUMPS CORDIAL BOTTLES

I have used the term *CORDIAL* to cover both aerated sodas and syrups. These products were luxury items rather than like present times when such beverages are drunk daily.

The majority of aerated soda bottles found in the area of the park are broken. Those that were whole were generally returned for the refundable deposit returned – usually around 1d per bottle.<sup>1</sup> The majority of cordial bottle fragments are Schweppes. The size of bottles vary in size from around 6cm in height to three times that height. The majority were clear glass, but a number of light green and brown bottles were also used. Brown usually contained ginger beer. Some clear bottles have turned a light purple in colour – dating them around the 1920s. Some fragments are dark purple and date from the late 1800s into the period of around 1916.

Ginger beer up until the late 1920s was usually delivered in earthenware crocks (demijohns) and later in brown glass bottles. The usual glass for cordials was clear, however, green in varying shades was also used.

Arthur Freeman who lived at Westlake (Stirling Park) first at No 3 Sewer Camp Mess (1922-23) then in a tent previously used by the mess caterer of the old Tradesmen's Camp (1924-1927) and finally in 13 Howie's Cottages (1927-1930) recalled that soft drinks were delivered once a fortnight to the camps and settlements in this early period.

The majority of types of aerated sodas found are small crown seals around 22.5 centimetres in height. However some pieces of codd bottles have been found. These were often broken open by boys to get to the codd (marbles). Below left is a codd bottle and on the right a piece of blue glass (medicine), marble and a codd.



Others bottles found that date from the 1920s include George Morton's key stone (EW O'Sullivan), TJ Sheekey and from the 1930s, Commonwealth Cordial Company and Capital Cordial Company bottles.

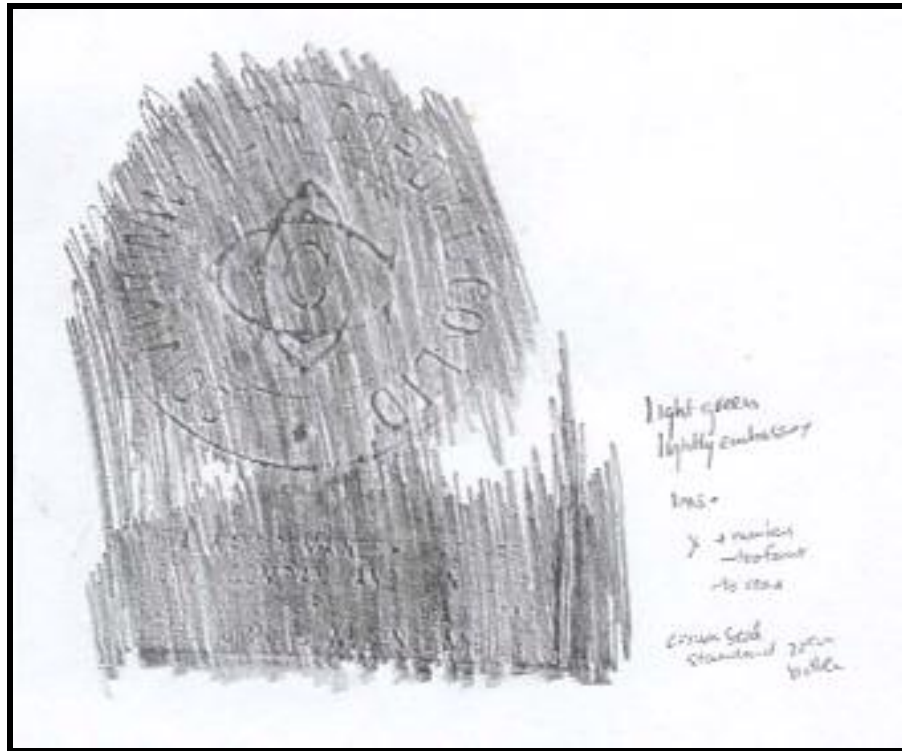
---

<sup>1</sup> 1d = one penny. The smallest coin was one farthing, then halfpenny – 4 farthings to one penny and two halfpenny to one penny. 12 pennies – 12pence = one shilling. Two bob = 2/- and 5 bob = 5/-. Pennies were copper – 3d, 6d, 1/-, 2/- and 5/- were silver. The first note was 10/- and the next one pound. Twenty shillings to the pound. When decimal currency came in 10/- = \$1; 6d = 5c; 10d = 10c etc. In the 1920s and 30s the weekly wage for working class men averaged between around 3 pound to 5 pounds.

Included in this work are examples of cordial bottles that I have bought or found that are from the territory or nearby districts.

Sugar syrups of different flavours (cordial drinks) were bought in bottles. The ones that I recall were in use in the World War 2 years and later. A Mynor cordial bottle was found on Stirling Ridge. I also remember Schweppes Cordials that had flavours of lime, lemon, orange and lemon.

### **THREE C'S – COMMONWEALTH CORDIAL COMPANY & CAPITAL CORDIAL COMPANY.**

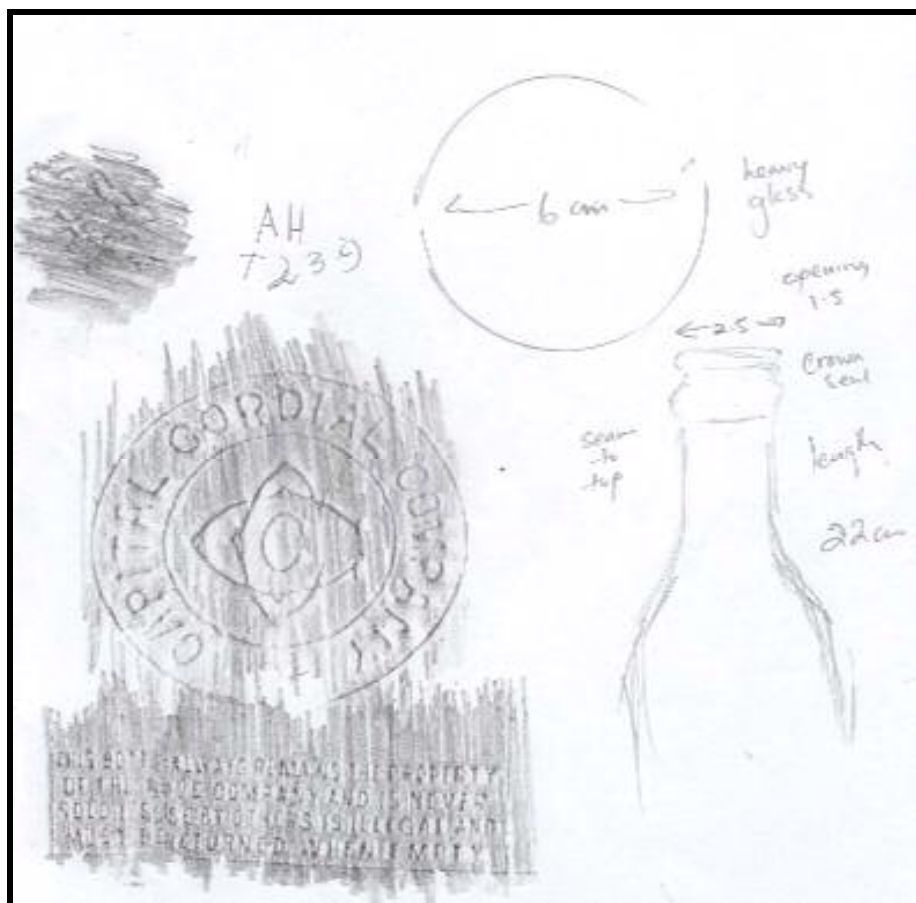


Above is a rubbing from a Commonwealth Cordial Company Bottle. This bottle is a crown seal one. The Commonwealth Cordial Company commenced in Queanbeyan in the early 1930s and then moved to Canberra. The firm later became Capital Cordial Company. The next photograph shows a Commonwealth Cordial Company label on a soda siphon. These labels were placed on sodas and soda siphons.



Above is the motif used on the soda bottle. The same motif is embossed on the soda bottles.

Below – clear glass bottle is a big Capital Cordial Company soft drink bottle circa 1950s. The 3 C's are not used on these bottles.



As a rule of thumb – the thicker the glass the older it is. Modern glass bottles have quite thin walls compared to the earlier glass. Note the photograph on the right



below. In the 1960s a pattern of dots around the rim of bases of bottles was introduced. Below are photographs of some of the bottles found in the park's dumps.



## SCHWEPPES

A book, *Schweppes The First Two Hundred Years* by Douglas A Simmons – Acropolis Books Ltd Washington DC contains a number of photographs of Schweppes bottles such as the one shown in the next photograph.

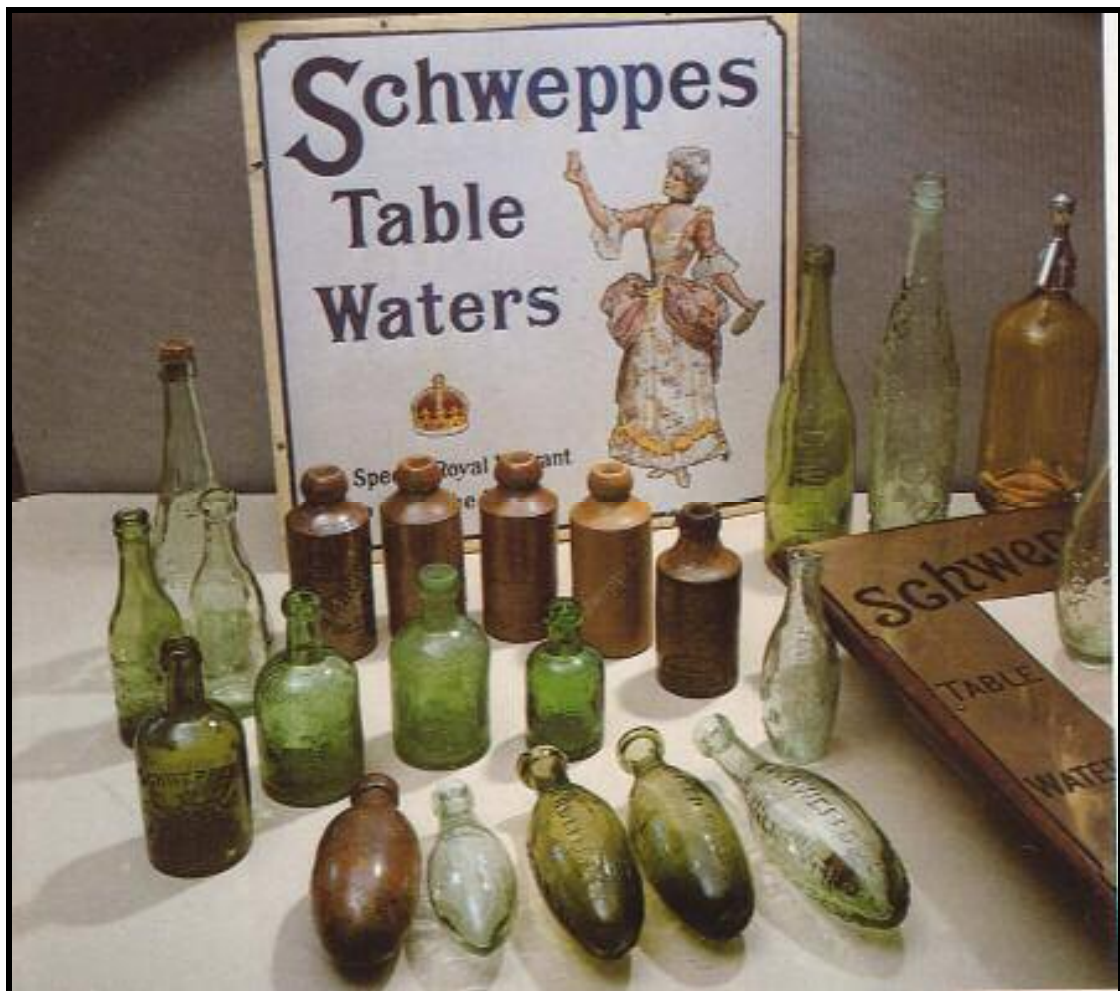
In the book he tells of the establishment of Schweppes in Geneva in 1780 by Jean Jacob Schweppe and the gradual growth of this soda drink throughout the world including the establishment of the firm in England. One of the trade marks used by Schweppes was a fountain. It was based on the fountain that faced the dais for the opening of the Great Exhibition in the Crystal Palace by Queen Victoria in 1851. Earlier in August 1837 Queen Victoria granted a new Royal Warrant of Appointment. With the exception of Edward VII's whose reign was short, the monarchs who followed Queen Victoria continued the granting of the Royal Warrant.

When Schweppes was first introduced into Australia is not known, but the author suggests that in the early nineteenth century. The firm appointed its first agent in 1850 and by 1870 a warehouse was opened in Sydney. By 1877 a plant was established in Foveaux Street Sydney where Schweppes products were produced. In 1885 a second factory opened in Abbotsford in Melbourne. These were followed by additional factories. In the early 1900s shipping of the product to other states commenced.

The author also notes that in 1930 Schweppes purchased a 51% interest in Kia-Ora Lemon Squash. This firm's beginnings went back to 1896 in Australia when John Dixon left his father's farm to set up business in Sydney selling ice. He added *lemonade and ginger beer to his products, but his real success came with a new drink,*

*a chilli punch, hot and spicy, with the effective designation of 'OT'. By 1909 the Australian business was so flourishing that it was decided to enter the British market, where OT was also successful, being sold chiefly to the licensed trade for use as a flavouring added to beer, spirits and the like, and described as 'The Sauce of Drinks'. A few years after Schweppes had embarked on the large-scale production of fruit squashes and cordials and British wines, the OT company commenced the manufacture of a lemon squash in which the actual pulp of the fruit was included...This was launched under the name of Kia-Ora, a Maori word meaning 'Good Health'.*

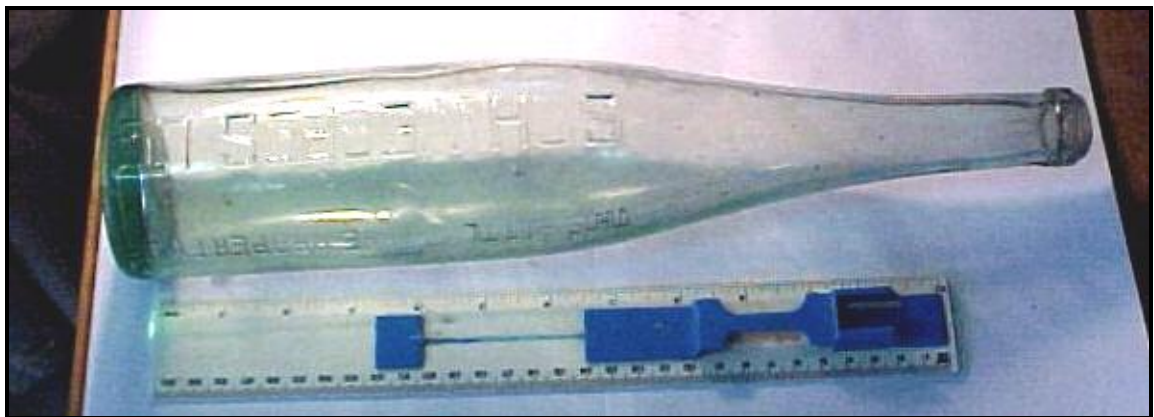
The information continues on to tell us that the shortages of beer and spirits in the period of World War One led to the demise of the OT production for that market. However the lemon squash took off and after the war other flavours were added. After Schweppes took over the dominant number of shares Kia-Ora continued and it is one that I remember into the 1950s and later.



Following are examples of Schweppes bottles - the broken examples are from Stirling Park.



Examples of Schweppes Bottles That Vary in Size (some found in the park).











Above – details of Schweppes bottles and other bottles found in the park plus piece of a crockery doll's head. The bottle with black ink is a Wiltshire Black Ink bottle.  
Below a Schweppes cordial bottle detail of one similar to the photograph above.



NB – the Royal Warrant was given in 1835.



Above Schweppes cordial bottle found in the park. This is the type that had flavoured cordial to which water was added. Next series of photographs shows other Schweppes bottles found in the park.





Above is my Schweppes bottle and below left a similar bottle advertised on e-Bay. Below right is another Schweppes bottle and next to it a Lackersteen sauce bottle.



Below is a cone shaped Schweppes bottle for sale in June 05 in e-Bay.







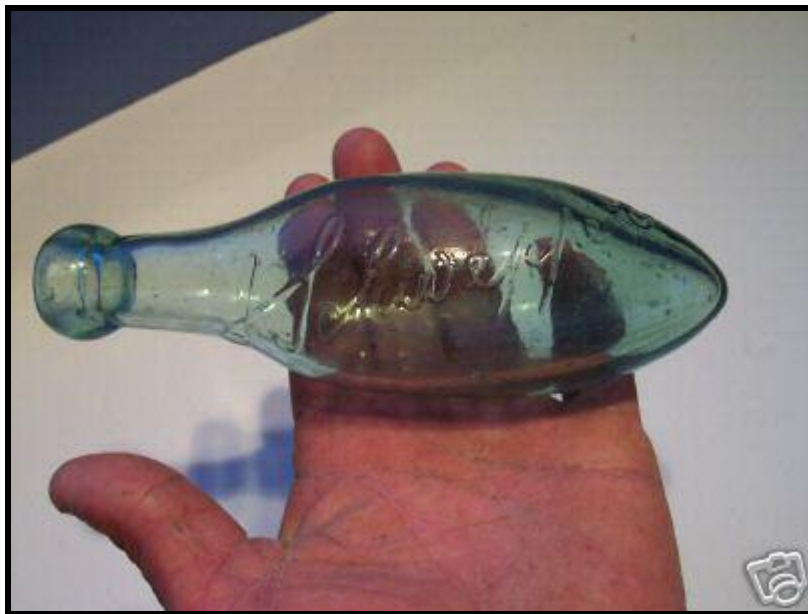
Above is a Schweppes bottle owned by John Bruggeman. The next photograph on the left shows the bottle in a vertical position. In the centre is another similar bottle found on e-Bay. On the right is a Schweppes soda water advertised on e-Bay.



Following are other examples of Schweppes bottles found on e-Bay (March 2005).



*Schweppes soda with a picture of a 3 tiered fountain. SCHWEPES is in script writing on the shoulder and the word TRADE MARK appears on either side of the fountain.*



*This superb old small size torpedo with an applied blob top would date to around the 1860s/70s. Embossed diagonally lengthwise in script writing is "J Schwappe & Co Ld". The embossing is very clear. It measures 175mm long x approx 60mm across the middle.*



The above bottle is a Hamilton – blob top Schweppes. One base of what I think may be a similar bottle was found in the park. Below left is a Schweppes cordial bottle that would have had a cork stopper. On the right is the detail of another Schweppes bottle that has a pear & leaf motif. The full bottle is shown in the next photograph.







The above Schweppes bottles would be cordial bottles. I recall that Schweppes put out several excellent cordial flavours that included lime and lemon. The bottle below is an old blob top bottle.



The next page has photographs of Schweppes bottles found in the dumps in Stirling Park.



## TJ SHEEKEY

TJ Sheekey bottle used a trade mark showing Britannica with a key. There were several of these found in the park including a broken codd. Several bottles with nicks in them (crown tops) were found in the Quarry Dump (Attunga Point). Other colours are in addition to clear glass are brown (ginger beers) and a light green. TJ Sheekey traded in Wagga Wagga, Yass and the Canberra area. One TJ Sheekey bottle in my collection that is a light purple in colour does not have the traditional trade mark. It is shown as a rubbing – bottom photograph. Sheekey provided the soft drinks at the opening of Parliament on 9<sup>th</sup> May 1927.

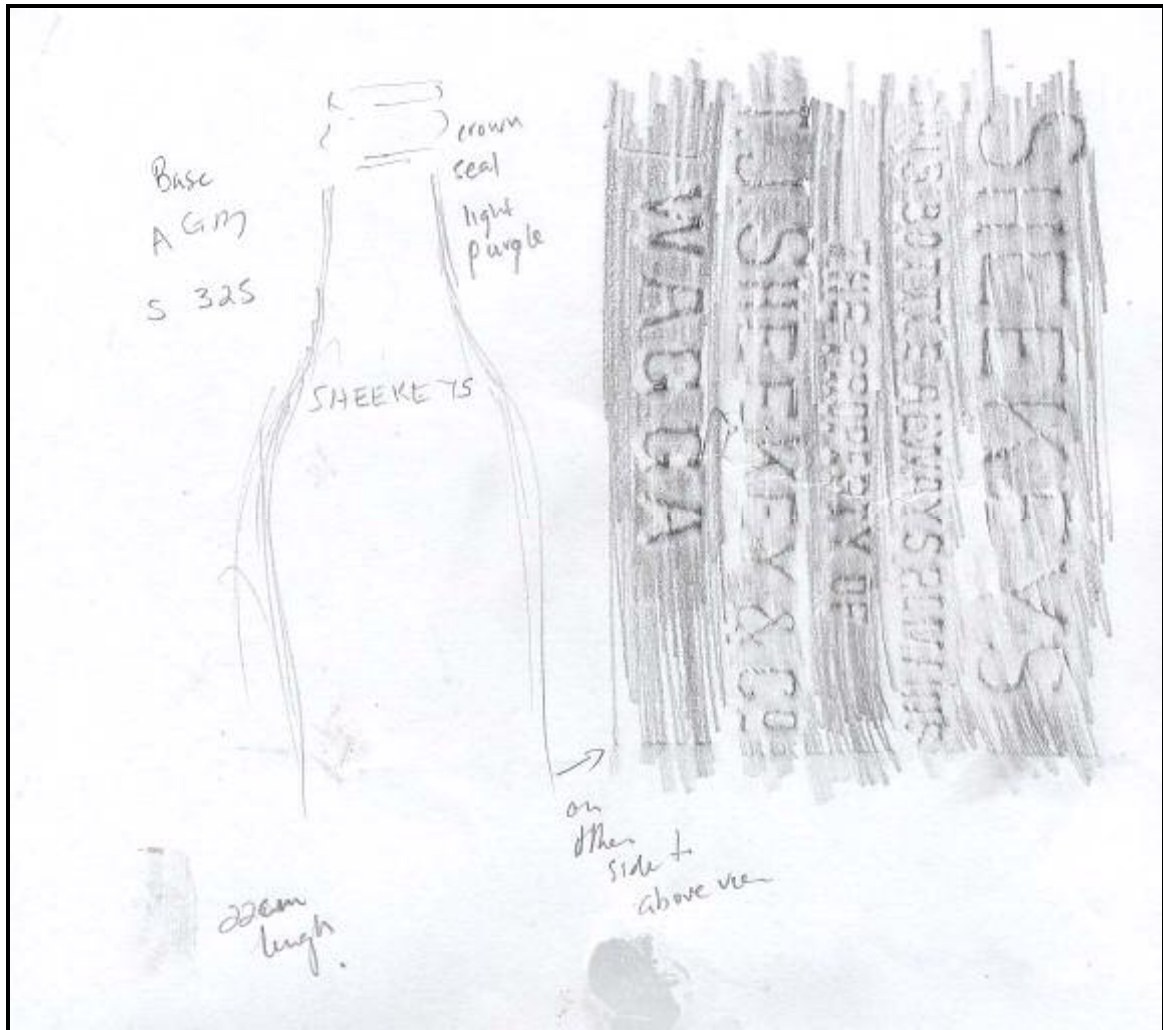


The next rubbing was taken from the bottle on the right.





The following rubbing is from a TJ Sheekey bottle from Wagga that has not used the Britannica trade mark. It has turned a light purple in colour.



**Bottles Post World War 2 found on Section 128, Block 1 Stirling Park, Yarralumla.**



These glass containers were removed from their clay beds where they were embedded as parts of stone arrangements. The removal took place during a period of evaluation by NCA representatives. The one on the left has M1 on it and it was

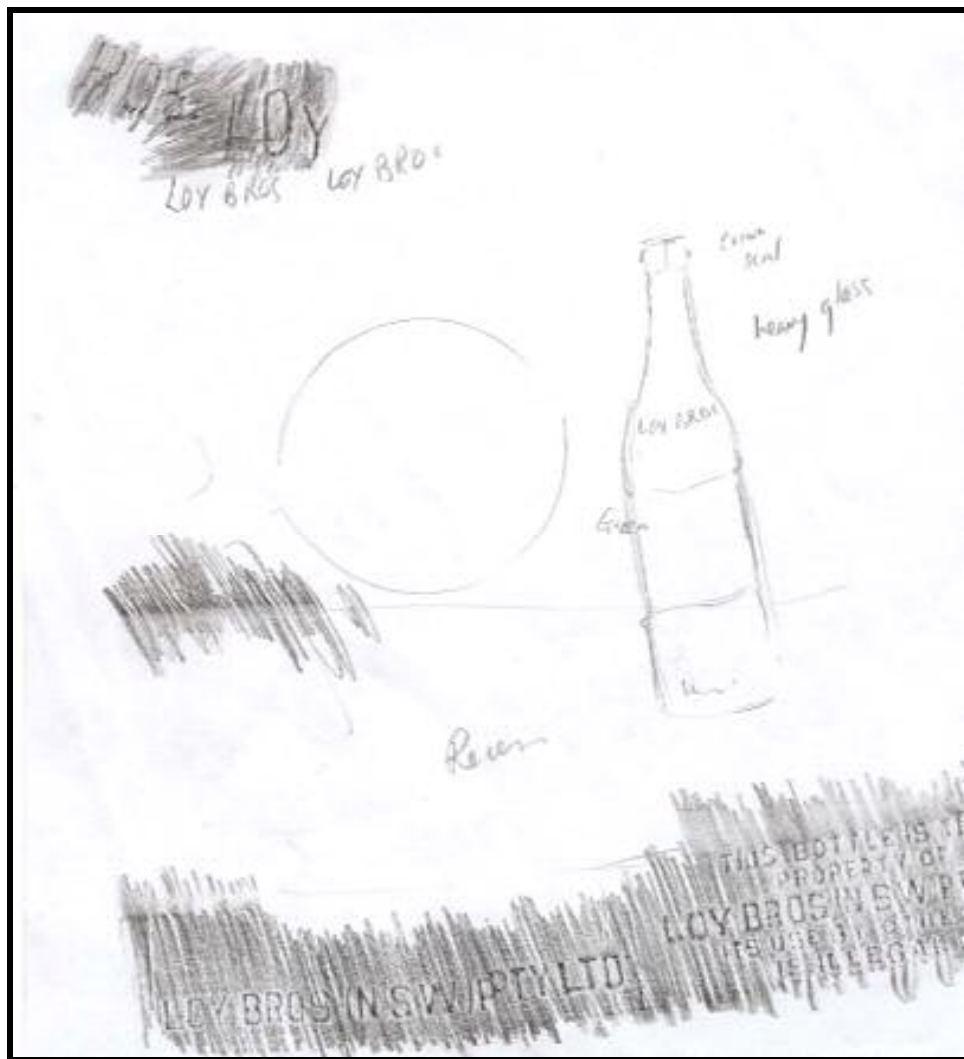
probably a juice bottle. The one on the right is a soft drink bottle. The top was broken off this bottle at the time when I found it in October 2003.

The bottle was manufactured by the Telsca Bottle Company who also produced bottles for *LOY'S* soft drink. The photograph below shows a Loy bottle for sale on e-Bay in March 2005. Another bottle – unbroken – large soft drink bottle of the size used in the 1950s and 1960s with screw top still in place – clear glass – also found in Stirling Park. I have been unable to find out any more about this particular glass manufacturer. I also have another Loy Bros bottle soft drink that is a light green glass and has the added information that the firm was NSW. The Loy bottle that I own is shown bottom right.

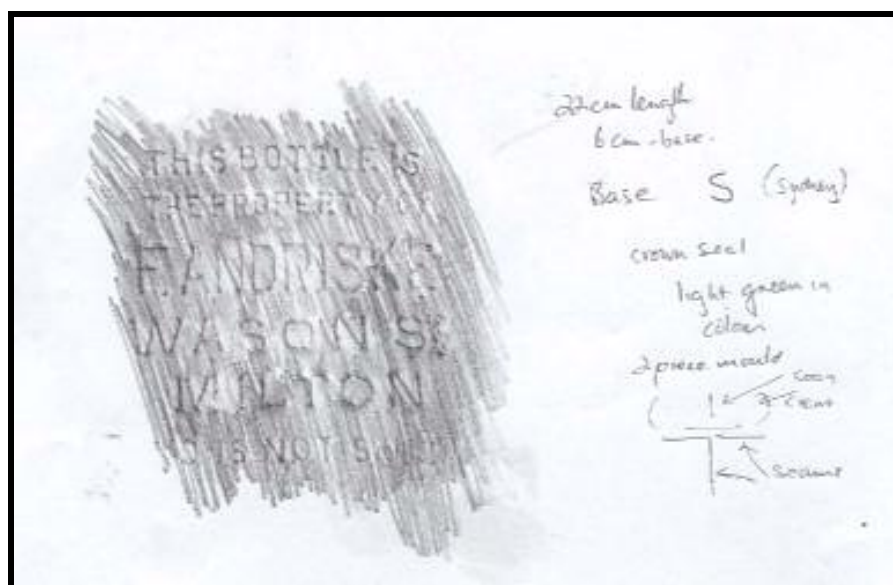


Third bottle from the right is the Loy Bros bottle. Second from left is a Gilbey's Gin.





Below is a rubbing from F Andriske soft drink bottle found in the park. No information about this firm has been found to date. It came from Milton, NSW.



A number of demijohns (broken) have been found on the hillside opposite Lotus Bay (Stirling Park, Block 3, Section 128 Yarralumla). The majority are Fowler products and contained SHARPE BROS cordials. A Sydney collector, Martin Ruckert has a web page in which he displays part of his collection of demijohns – including Sharpe Bros. He mentioned that from 1920 the demijohns had wire handles replacing the older version of ceramic handles. Both styles have been found on the hillside. The wire handle was introduced to save money and make the product easier to handle.

THE JAR IS THE ABSOLUTE  
PROPERTY OF  
AND MUST BE RETURNED TO  
**SHARPE BROS.**  
AUSTRALIA  
NEW ZEALAND  
SMALL & LARGE BOTTLES  
**CAUTION**  
Persons Damaging, Wrecking,  
Blasting, Tearing, or  
Misappropriating the use of  
this Jar  
WILL BE PROSECUTED

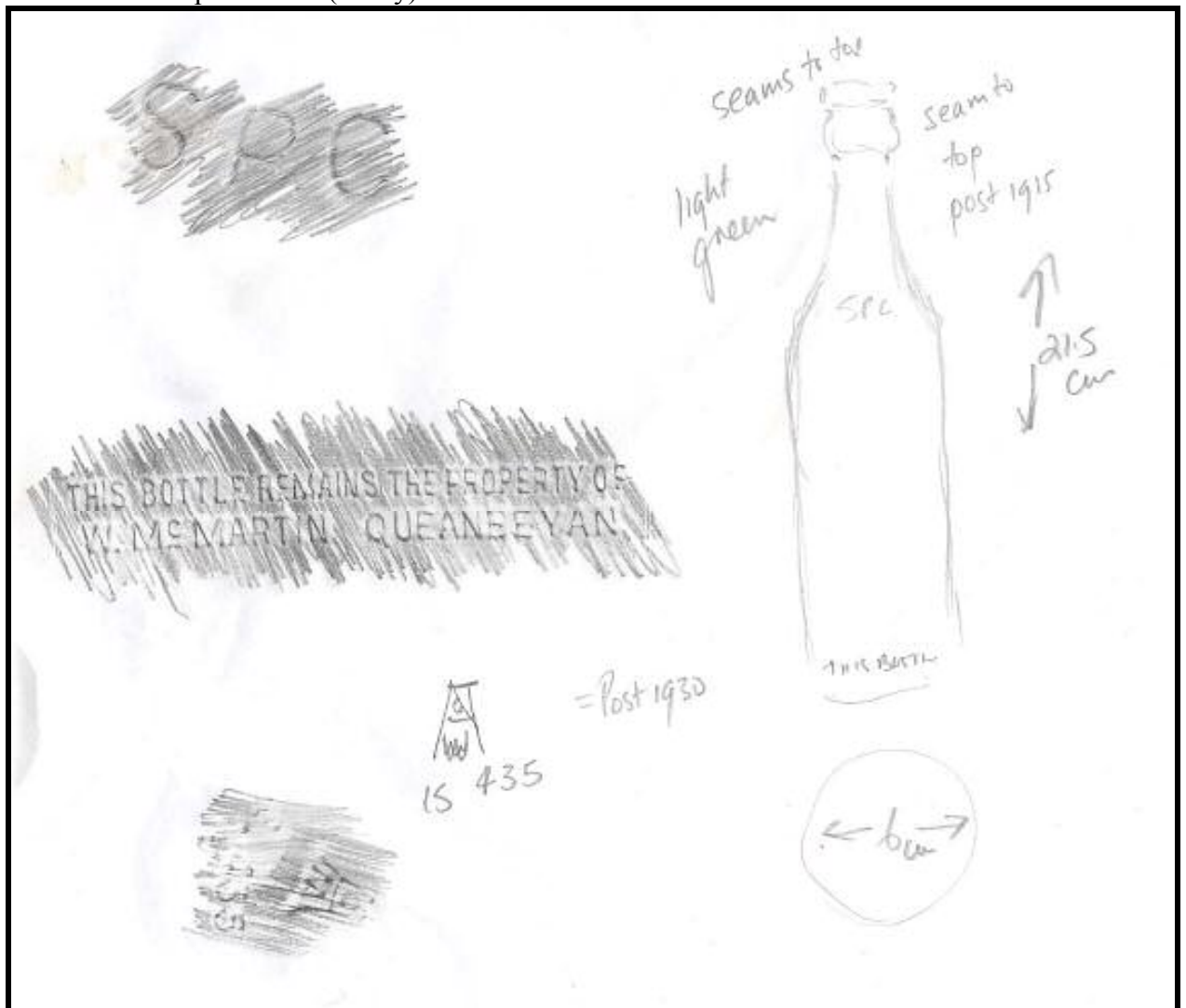
*Sharpe Bros.*  
ESTD 1888

THE JAR IS THE ABSOLUTE  
PROPERTY OF  
AND MUST BE RETURNED TO  
**SHARPE BROS.**  
AUSTRALIA  
NEW ZEALAND  
SMALL & LARGE BOTTLES  
**CAUTION**  
Persons Damaging, Wrecking,  
Blasting, Tearing, or  
Misappropriating the use of  
this Jar  
WILL BE PROSECUTED

*Sharpe Bros.*  
ESTD 1888



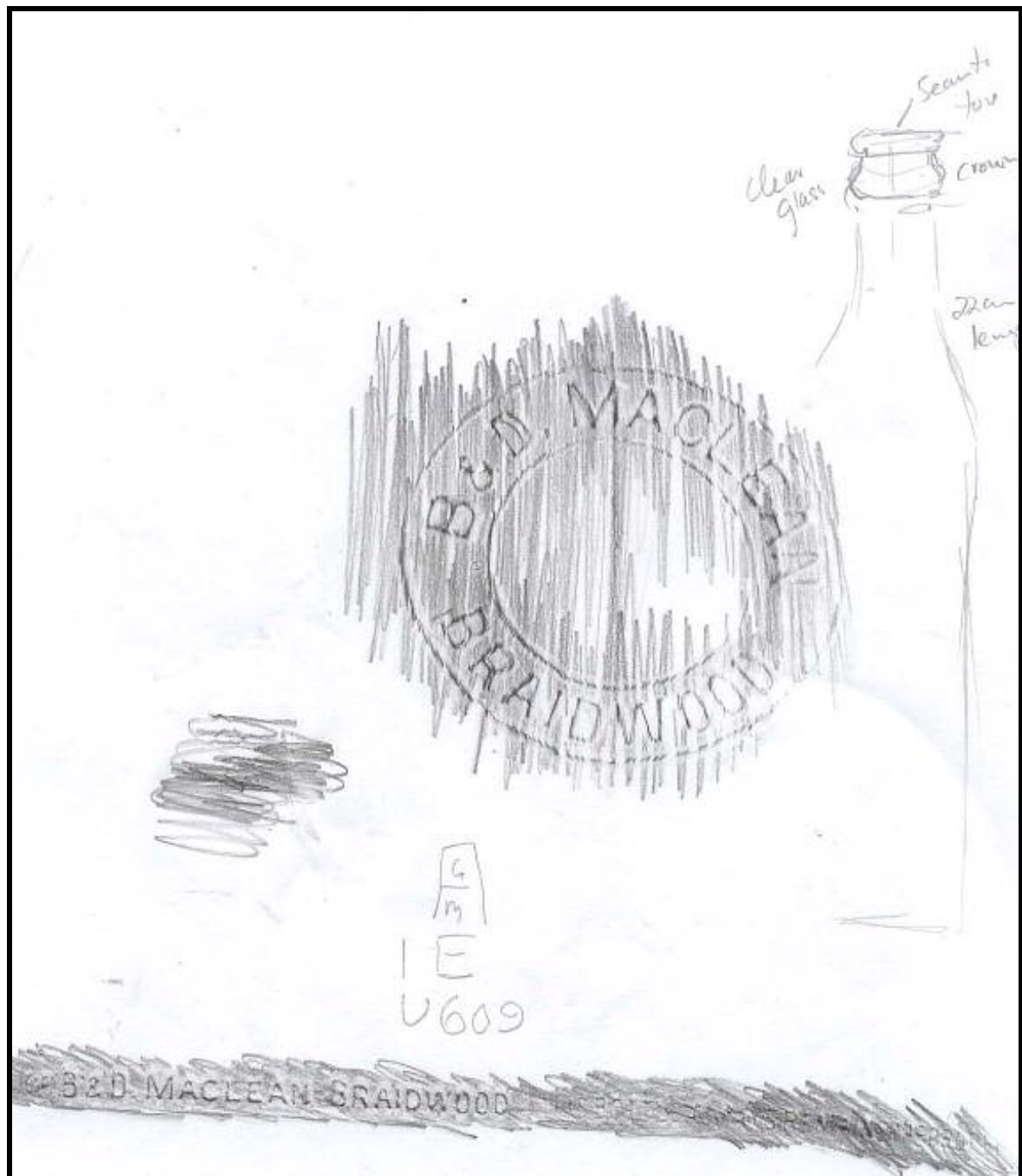
Above is a Sharpe's bottle (e-Bay).

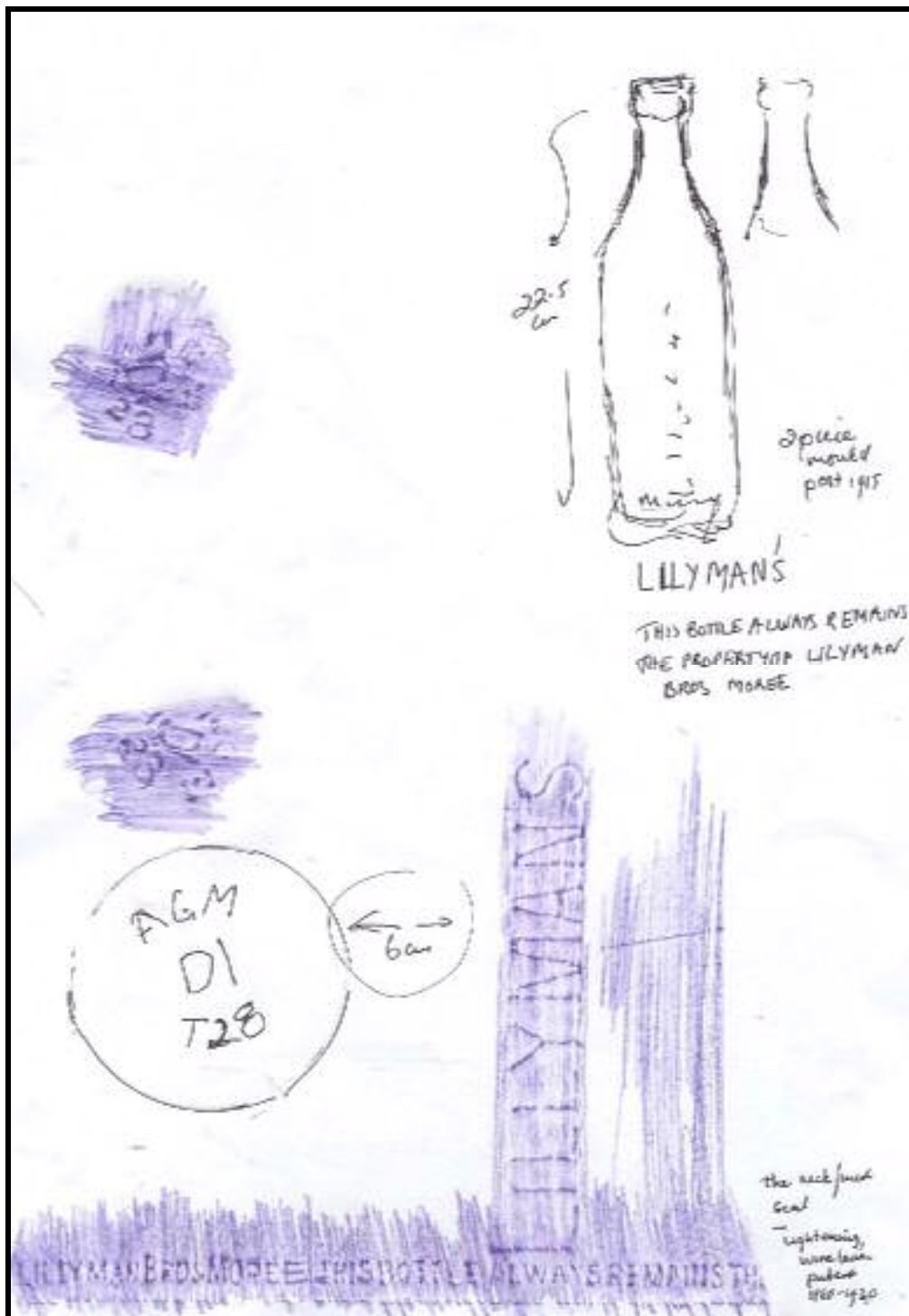




## BOTTLES FROM OTHER AREAS

Many small country towns had their own cordial factories. The examples that follow are a few examples. Below rubbing of a B&D Maclean bottle Braidwood.





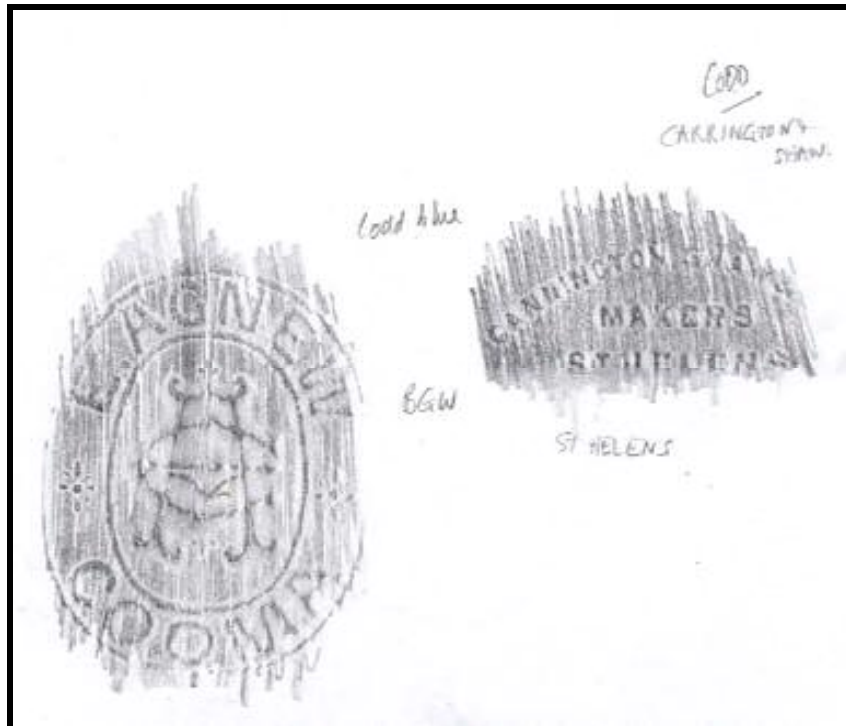
The above cordial bottle is Lillyman Bros of Moree. On e-Bay (next photograph) a Lillyman Soda Siphon of Tamworth was advertised.



Above left is the Lillyman Soda Syphon. Centre is a Henfrey Bottle used by soda water manufacturer, William Goodman Henfrey. His firm worked between 1860 – early 1900s in Sydney. Courtesy of his grand daughter. On the right is Agnew bottle from Cooma. This bottle is similar to two owned by John Bruggeman (shown on next page – out of focus).







Above is a detail of one of the bottles – Cooma – and below a photograph of the base of the bottle.



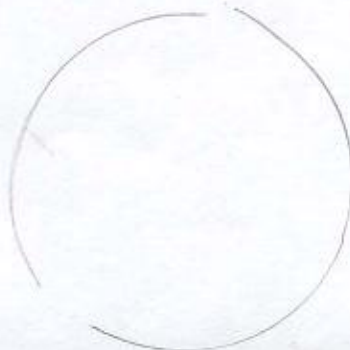
Base of the Cooma bottle.

W STEELE & CO

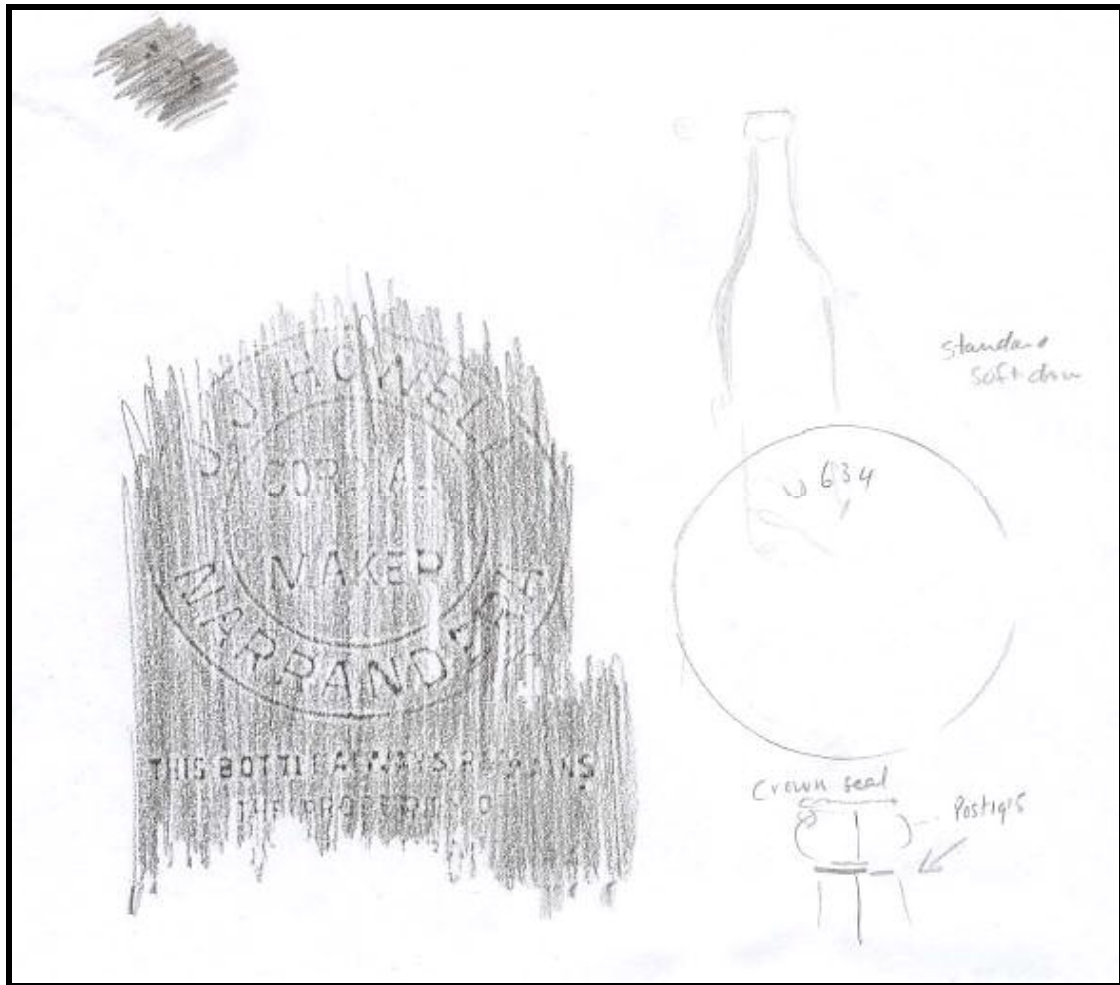
~~W STEELE & CO~~  
GOULBURN

Recsma

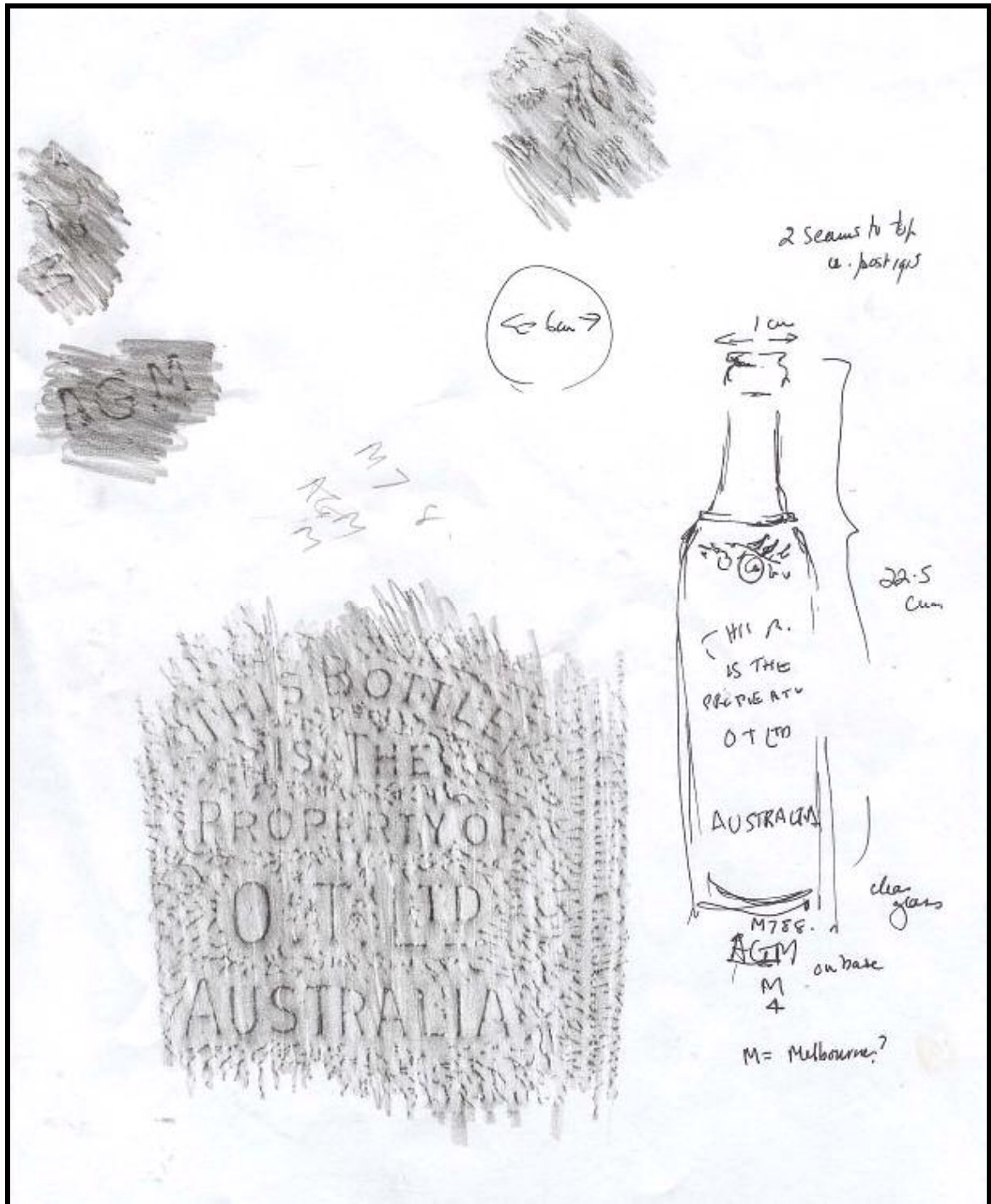
~~THIS BOTTLE IS THE  
PROPERTY OF  
W STEELE & CO GOULBURN  
AND IS NEVER SOLD~~



$\frac{G}{M}$   
GU  
U931







There are a number of OT bottles that I won. These were not common in the local area (see reference to the bottles in the Schweppes section). The above bottle is heavily embossed and is a crown seal bottle. On the next page is another OT bottle that is turning a light purple. It was a gift from a Victorian bottle collector. Below are two details of the bottle.



Above right is another example of an OT Bottle. – Dixon's OT Bottle, Melbourne.



Three OT bottles (e-Bay). Below are four of my bottles – the two on the left are Schnapps and the two on the right – contents unknown. These bottles are of a similar shape to some of the Schweppes pieces found on the hillside.



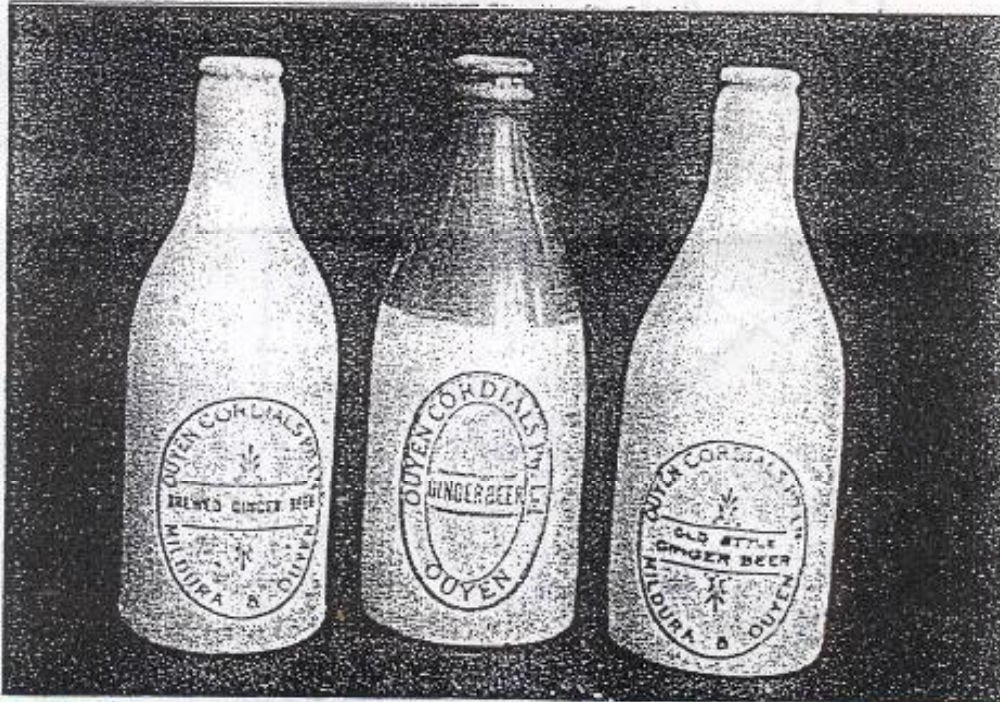


# Ouyen Cordials.

The cordial factory was half way along Mitchell Street. It was owned and operated by the Heley family, under the name of Ouyen Cordials. It closed down in 1936, another victim of the Depression. The whole plant, like the plaster works went up to Mildura, where the family started up again in Thirteenth Street, trading under the name of Heleys Drinks Ltd. No new drink bottles were made under the name of Ouyen Cordials after the 1930s, but you could still find bottles branded Ouyen Cordial; the same bottles are still in service today."

In a joking way I said to Wally "How many times have they been filled since 1936?" He replied he thought old Len Heley would have lost count by now. The company was sold just a few years ago to a Merbein company, but the name of Heley will go on for a long time to come.

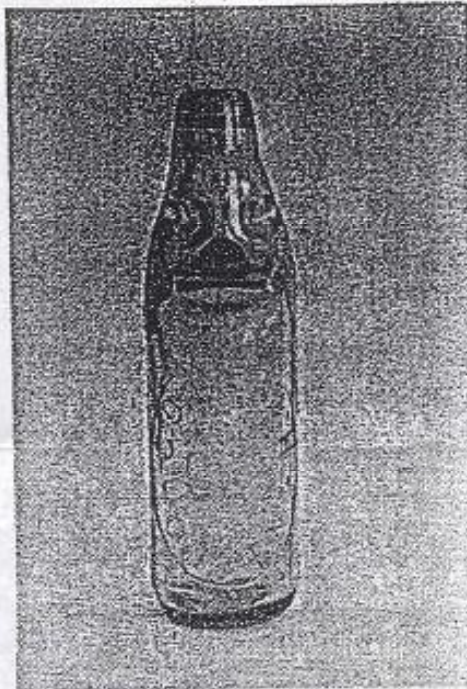
*The bottles on the right and left side of the photo are branded Mildura and Ouyen. They would have been manufactured between 1932-1936. The middle bottle between - 1922 - 1932.*







*All these bottles are a part of a collection owned by Mr. Wally Ditchburn of Mildura. I thank Wally for his photos and his perseverance.*



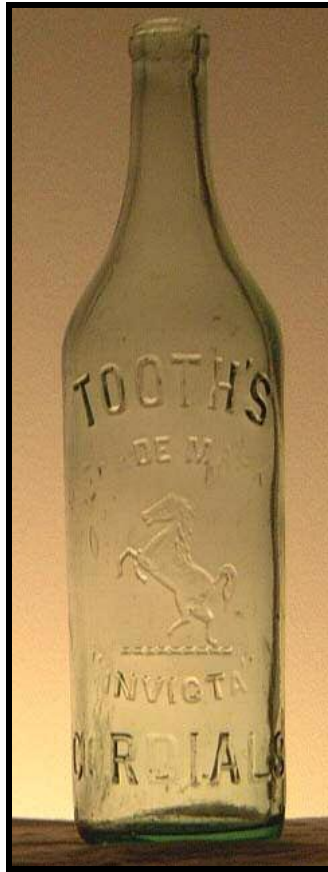
*This bottle is very rare and valuable. It is listed in the Mildura Bottle Collector's Catalogue as being the only known one to exist today. It is a marble seal bottle and it carries the brand name of "C.C. Leitch, C.C.L. Ouyen."*

*A sample of the C.C. Leitch seal.*

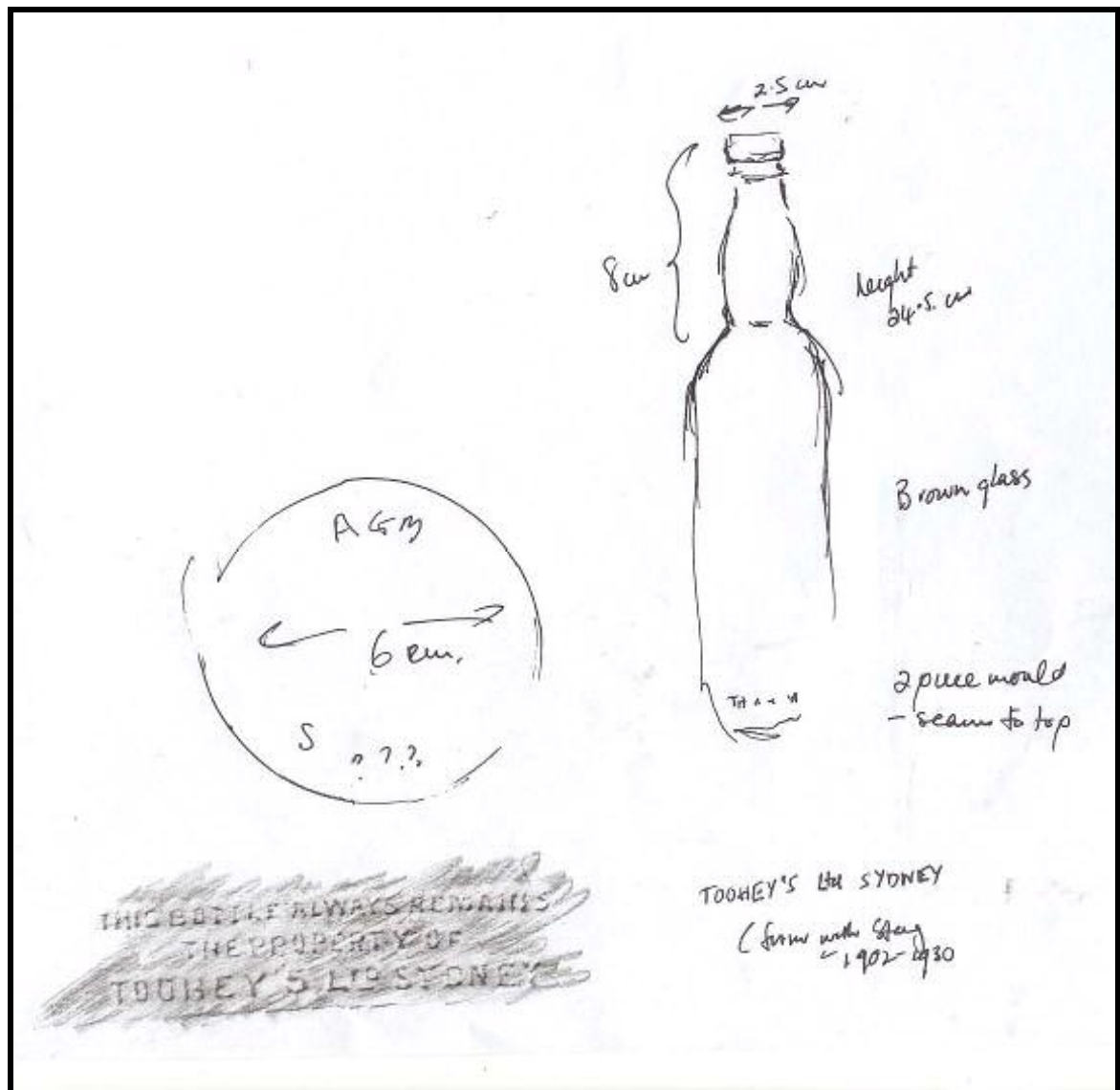


The first application for a building permit, to build and operate an aerated drink factory on land Lots 16 and 17 in Mitchell Street, Ouyen was lodged with the Walpeup Shire Council in late 1913. The application was held up pending a report from the Health and Environmental Department.

It was operated by the Leitch family from 1917 until 1922 when the Heley family took over and ran the business until 1936.



Tooths & Toohey's also produced cordials. One of the latter bottles was found on the hillside opposite Lotus Bay in the area of an old creek. The next illustration is of the Toohey's bottle found on the hill.



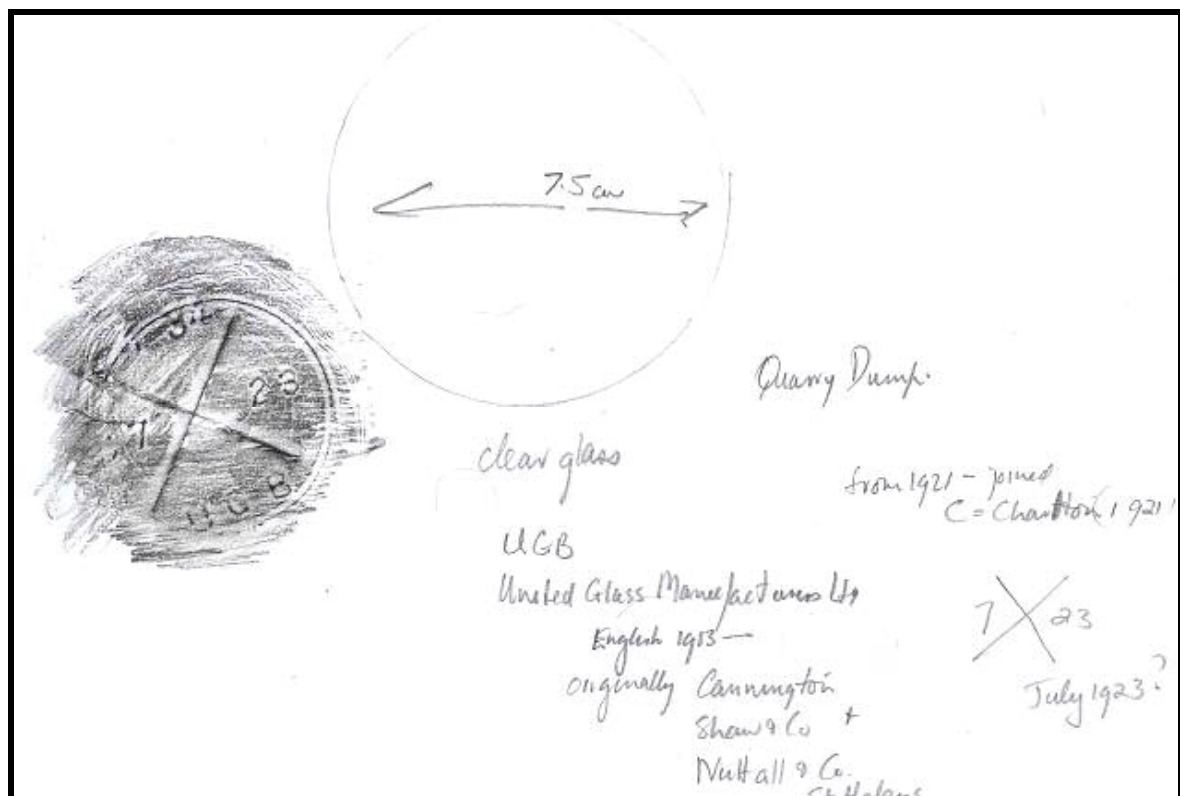


Marshall bottle with wagon wheel trademark. On the next page is an example of a blue coloured Marshall bottle that is in my collection.



From e-Bay – two old nickel plated aerated water tops.

## OLD FRUITWOOD CODD OPENER



Above is a drawing of crown mark found on the base of a number of glasses discovered in the park.



Above left Lackensteen sauce bottle and a Randall's Cordial Works, Liverpool on the right. Detail of this bottle on the right hand side photograph. On the base is AGM with skirt. Below is the base of a bottle with a star shaped embossed on it. It contained?

