

STIRLING PARK – TOYS, BOOTS, METAL ETC

Toys



Above is a photograph of *Alice* found in the Quarry Dump. This toy is a soft rubber doll that reminded me of the illustrations in *Alice in Wonderland*. The majority of doll pieces found in the park's dumps are pieces of crockery dolls. They are quite small in size.

Also found on the hillsides of Stirling Park was a small jug that may have been part of a child's doll house or tea-set. This jug is now in CMAG. Below is a small cup found in a second hand shop that was probably part of a child's tea-set. It is the same vintage as the piece found on the hill.





Above are photographs that show a broken ceramic doll's head. It, along with the nearby glass was found in the Quarry Dump. Below is another photograph of doll's pieces found in the same dump. Note the child's cup that has the motif of the three blind mice story.





Above are doll's pieces and a 1922 penny found in two different dumps on the hillside opposite Lotus Bay. Below is one of two metal cap guns found in the area of Westlake cottages in *The Gap*.



Below left near my thumb is part of a mouth organ? Numerous similar pieces were found in the Quarry dump. On the right is a marble – that may have been a codd in a bottle or a marble. Both were used by children.



Games also included ones such as knuckles (sheep bones). Favourite toys made usually by boys included shanghais and bows and arrows.



Above L-R *Bubba*, *Lillie* and un-named doll. These were my first dolls that I was given in the period 1937-39. Below is a 1942 photograph taken at 27 Westlake (now in Stirling Park near the corner of Empire Circuit and Forster Crescent). L-R Ann Austin, Lauris and Colleen West.



Boots and Shoes.

Particularly in the Quarry Dump numerous boots were found. These were well worn and in many cases the soles were more nails than leather by the time they were thrown away.



Above is a woman's shoe and below is the heel of a shoe.





Examples of leather boots from dumps in the park.





A fold-up wire coat hanger was found in rubbish dump on the site of 1 or 2 Howie's Cottages. Also from the same site were burnt nails that filled a large plastic ice-cream container – left over from the burn up of building materials. Amongst the remains of the burn up were the 'clips' that held up stockings and the locks from a suitcase.

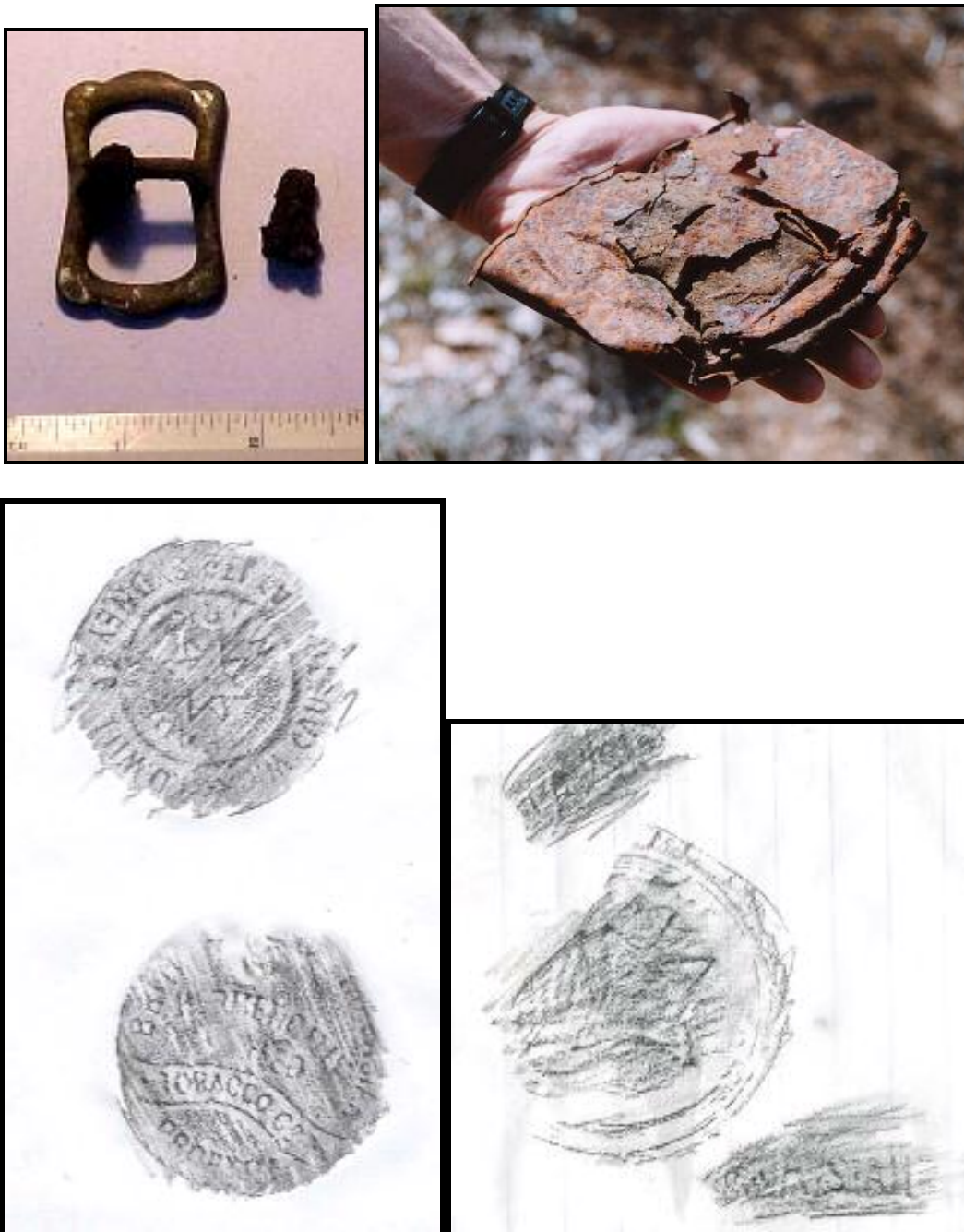
In the old quarry dump a small bread and butter plate sized alarm clock was found along with numerous batteries. One (or more) smoker threw away his bakelite cigarette holders and there was also the remains of a number of plastic combs.

The people in the kitchen at the Hotel Canberra were also careless in checking for the silver when throwing out the rubbish. Two small salt spoons, numerous tea-spoons and knives – all with the Hotel Canberra motif – were found. One of the tea-spoons and a salt spoon now reside in a glass faced cabinet in the hotel.

Metal found on the hillsides.



Above are pieces of metal found on the hillside opposite Lotus Bay in the area of the Tradesmen's Camp. Numerous tobacco tin lids (see right) surface on this hillside. Belt buckles are also common along with bits and pieces of metal including lead. Below left is another buckle found on the hill and on the right is a photograph of a tin with bitumen content. One rusted padlock was picked up in the area of the Tradesmen's Camp.



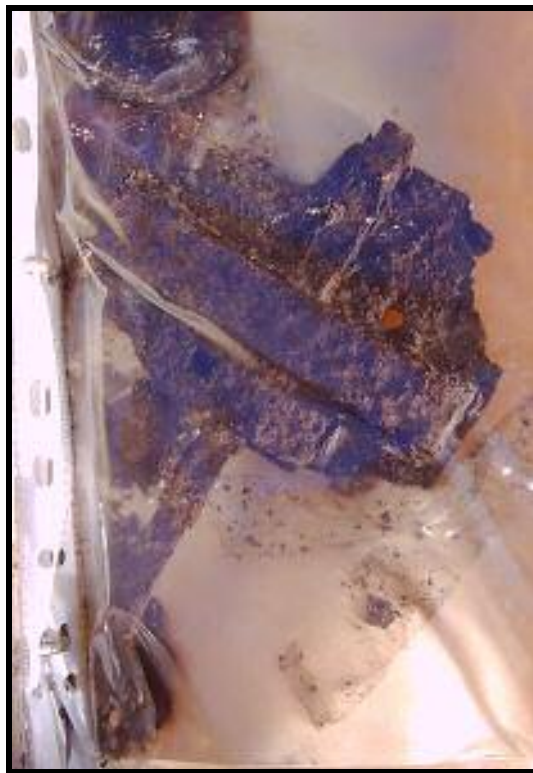
Above are rubbings from tobacco tin lids found in Stirling Park.















Below is a metal peg found on the Mt Pleasant workmen's camp site. It is similar to one found on the Tradesmen's Camp site at Westlake (Stirling Park).



WORK – TOOLS ETC.



Above are pieces that appear to be parts of a pulley system and may have been used by the sewer men who worked on the tunnels in the area between 1922 and mid 1925. Metal cable used by the sewer workers is also found throughout the park. The next four photographs show examples of cable and a tree with bolt.





A number of broken tools have been found in the dumps in the park. Following are a number of examples.





The tool centre near the ruler has a wooden handle. The metal end section is broken.



Above is a drawing (top left) of a lead plumb line found near the site of 47 Westlake. With string attached to the nail in the lead it still works well.



Above is a photograph of the lead plumb line on the left. Next to it is the reverse side of a fob watch that was silver plated. Far right is the padlock found on the hill in the area of the Tradesmen's Camp. Below is a photograph of the same plumb line and the silver watch lid.



The next photograph shows the same padlock and silver watch lid as shown above. Next to them are pieces of beer bottles one of which is dated 1918.



Above



Above are bones and metal pieces including wire found in a dump on the hill opposite Lotus Bay.



Above are parts of a push bike found in the Quarry Dump. One old car body was found on the site of one of Howie's cottages. It had a timber frame. Below on the next page is a photograph of a tree in the area of the quagmire opposite Lotus Bay. In the area of *The Gap* near the old Westlake Hall someone stuck the prongs of a garden fork on a branch. The metal part is still there. Below are pieces of glass that includes the metal remains of an electric light globe – found in the quarry dump.







Above left is a photograph of bike parts wedged into the fork of a tree in the area of the quagmire opposite Lotus Bay. On the right is a fork in a tree near the Westlake Hall.

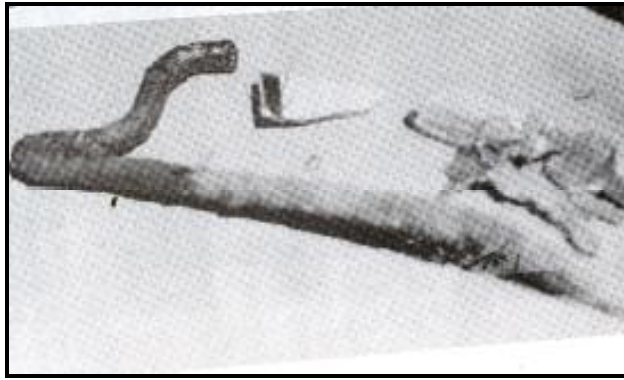


Above are photographs of parts of the red car body on the site of a Howie's cottage.



Above are metal pieces found near a cut off light pole in the area opposite Lotus Bay. Contractor Howie's settlement, Westlake cottages and the camp mess rooms were connected to the electricity system. Several light globes were found in the Quarry Dump. One example of a broken one shown below:





Above – metal peg found in the area of the Tradesmen's Camp. In the same dump a black plastic fine tooth comb was found. This comb may be from the 1930s or later period? The arrow below points to a metal bolt in the ground at the Tradesmen's Camp.



Above is a fine tooth comb found in a dump on Block 1, Section 128 Stirling Park.



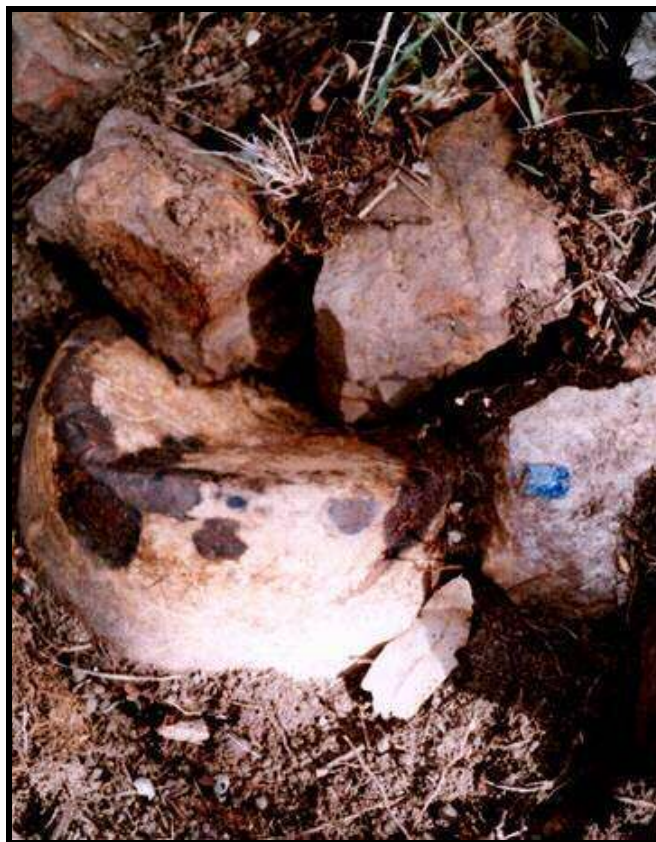
Above is another example of a buckle found in the park. Below is a piece of metal that has been forged in a blacksmith's shop. It was found on the hillside opposite Lotus Bay.



Household metal



Above is a enamel pot – *gesunder* (the bed). It was found on Stirling Ridge in a dump probably used by one or more of the people living in the sewer camp married quarters – humpies. The next photograph show an enamel saucepan incorporated into a circular stone pattern. Found in the area of the Ablution buildings Tradesmen's Camp. Note the small piece of blue pottery found nearby.



Below is a metal waste paper basket filled with concrete found on the hill opposite Lotus Bay. In the area of the humpies on Stirling Ridge there are a number of tins filled with concrete that may have been used in the construction of the humpies.



Below is a petrol tin found on Stirling Ridge. I have found tins on other sites that have been converted into buckets.





Above left is a detail of a concrete slab on the hillside opposite Lotus Bay. Note the impression of the corrugated iron used. On the right is a detail from the septic tank near the creek that runs through *The Gap*. The next photograph is of the lead lining in the same septic tank.





Above is a detail of river rock in the concrete used in the septic tank. Below is a photograph of the brick floors of the flats at the rear of 29 Westlake.



Below left is a photograph of a section of the metal front gate entrance to 29 Westlake. The pines are part of the remnant hedge. On the right are bricks found in the area of one of Howie's cottages.



Numerous metal cleats are found throughout the park. It is possible that they were part of the light rail used by the sewer construction workers to hold the skips.



Many of the grown trees have metal bolts etc in them. Many also have wire and/or metal cables.





Below is one of many bones cut with a metal tool found in the park.



Below is a broken knife found near Block 1 Section 128 Stirling Park. It has been used as a tool.



The two shillings shown above was bought. The Workmen's Club badge was found on the hillside. Below are two photographs showing one of the concrete slabs on the hillside opposite Lotus Bay – with a detail of a water channel that runs along the slab on the upper side of the slope. In the background is Lake Burley Griffin.



Below left is a photograph of another concrete slab on the hillside above. In the background is the Brazilian Embassy in Forster Crescent, Yarralumla. The arrows point to an old track running across the hill below Forster Crescent.





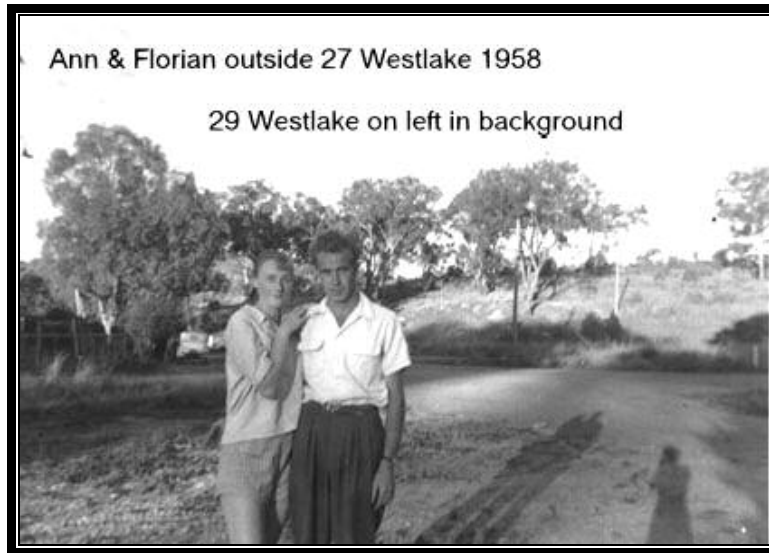
Above is a 1990s photograph taken in Stirling Park in the area of *The Gap*. Below right is a similar view taken in the early 1950s. On the left is another early 1950s photograph taken from roughly the same area but looking over to the left.





Above is a photograph showing an old culvert still in situ in the park. Above right is a photograph taken from the corner of Empire Circuit and Forster Crescent looking towards the sites of cottages 27 and 28 Westlake. Note the tall pine trees in the background. They marked the back fence of 28 Westlake. Next is a photograph of *Blue Menzies* taken near the trees in the late 1940s.





Above a photograph of Ann Austin and Florian Gugler. Below is a photograph of the same area taken in the late 1990s. Note the telegraph poles. They are still in the same position on the hill and would have been put there to service Howie's Cottages and the camps on the hillside opposite Lotus Bay. The Westlake cottages were also connected to the electricity supply.





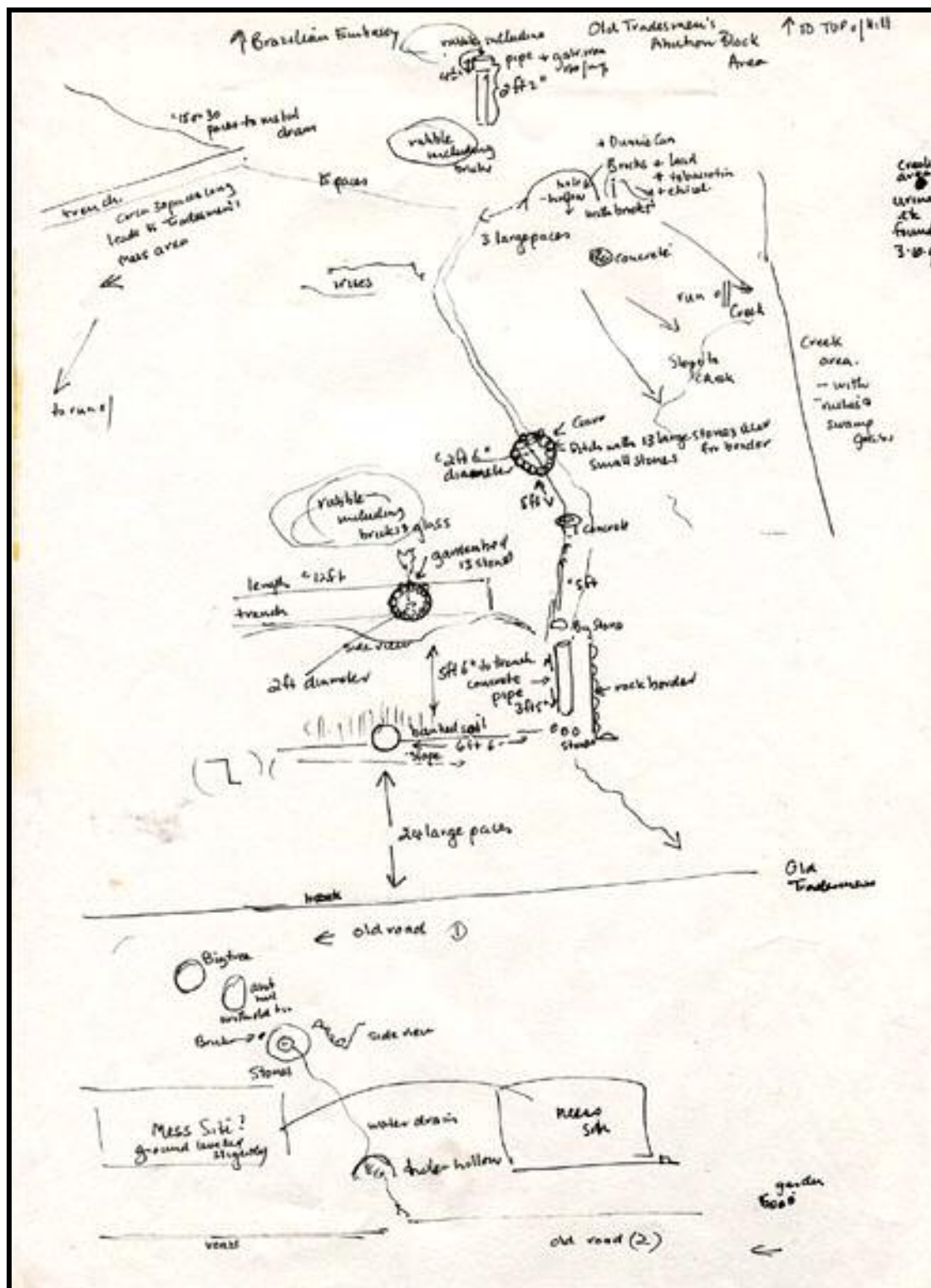
Above is a photograph of the Tradesmen's Camp taken around 1925. Below is a photograph of the same area taken from a slightly different angle in the late 1990s. The telegraph poles are still in the same place.





Above are two photographs taken in the area of the Ablution buildings Tradesmen's Camp. Note the trenches dug across the hill and the drainage systems – channels – to direct water to the quagmire.







The rock pattern above are similar to Aboriginal patterns found throughout the park. This particular one is near the Ablution area of the Tradesmen's Camp near the old road.



Bits and pieces of metal in the area of the Tradesmen's camp. Note the metal piece that is similar in shape to some of the bullets found on the hill.

Below some of the bricks used as part of a pattern in the area of the Tradesmen's Camp.



Flowers that have survived since the removal of the camps and settlements still bloom every year. Above and below are some examples. Near the Tradesmen's Camp there is a surviving patch of strawberries.



Above is one of the trees in the area of Howie's cottages. All the old trees have signs of human use of them. There are also many Aboriginal scarred trees in the park.



Above is one of a number of old survey marks found in the park. It is in the eastern end of the park near the corner of Flynn and Alexandrina Drives. The survey marks are documented on the 1913 map of the area. (Federal Territory Strip Maps.) Below is the site of one of the survey marks on Stirling Ridge. There are three on the ridge.



The road in the background of the above photograph is Empire Circuit and the area is the entrance to *The Gap*.