

E-BAY

E-Bay is an excellent source of information about glass containers of the period of the camps and settlement in Stirling Park. Following are examples of bottles from the same period.



Above: Information from seller – Believes the bottles to be 1920s – *POTTER & MOORE MITCHAM LAVENDER SMELLING SALTS*. The brand name with England underneath is on the lid. The bottle is 5 and half inches tall. [Plastics were in use in the 1930s but not white I think. If it was the 1920s it would have had, I believe, a metal lid. The bottle was obtained from a lady who died 40 odd years ago. I would think that this bottle is 1950s – 1960s.]



Information from seller: L-R

- A. Circa 1890s light aqua green Lee & Perrin Worcestershire Sauce. Made from a two piece mould with applied top and stands approximately 182mm in height...[similar bottles found in Stirling Park].

- B. c1880s-90s light aqua Holbrook's Sauce. Embossed *HOLBROOKS & CO* around the front also *HOLBROOK* around the neck. Made from a two piece mould with an applied top and stands approximately 225 mm in height...
- C. 1920s Aunt Mary's Tomato Sauce. Embossed *Aunt Mary's tomato sauce* in a circle – also – *This bottle is the property of Tillock and Coy Ltd Sydney Australia*. Has AGM on the base.
- D. 1870s-80s light aqua green mustard sauce. Rectangular in shape with bevelled edges. Has a lovely glossy representation...



Beer bottles on left and centre. Far left is a SA pick-axe, centre is a Queensland binoculars bottle and right is a Reschs Dinner Ale.



Above is a *Castlemaine* four X bottle label. On the right is a detail of the bottle, which is a Queensland binoculars bottle. Below left is another Brisbane binoculars bottle. Centre is a detail of the Perth Glass Manufacturers bottle and on the right the full bottle.





Above left is a detail of Bux *Brewing Company Melbourne* Tonic Ale. In fine print the label has *Printed by JW Niven Melbourne*. This bottle is early 1900s and is a 26 oz ring seal bottle. On the right is an emerald green Tooth & Co bottle early 1900s. Below is a 1918 NSW Bottle Company Bottle - right is a Toohey's cordial bottle.





Above are three early 20th century beer bottles. On the left is a Swan Brewery Co Ltd Perth Australia; centre Toohey's Sydney with reindeer trademark and on the right Queensland Brisbane bottle with the binocular trade mark.



Above three early twentieth century beer bottles. On the left is Newcastle bottle with CB&WB manufacturers with the trade mark of CB in the diamond shape. In the centre is the Maitland bottle with Bull trademark. Right is a Tasma Tasmanian bottle with the map of Tasmania.



Above is a detail of a Richmond Brewery (RBR) Bottle with the tiger trademark. I have a similar bottle. The tiger trademark is not often found on the bottles. This bottle is noted to be around the 1930s. Centre is a Richmond Brewing Company bottle with label. On the right is a Penfold's wine bottle. It has AGM on the base.



Above left is a Tooth & Company Kent Brewery Sydney. The trade mark is a rearing horse – Invicta. On the right is a green Toohey's 26oz codd bottle.



Above left OT Ltd bottle circa 1910. The punch cordial put out by this firm was originally developed by J Dixon in the late 1890s – later the name of Dixon was removed. This bottle is 22.2 cm in height. Centre are three Schweppes bottles and on the right is an internal thread Mission Lemonade bottle.

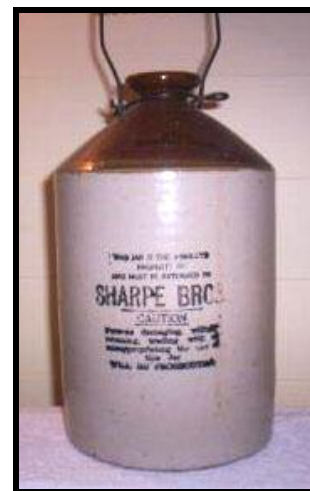


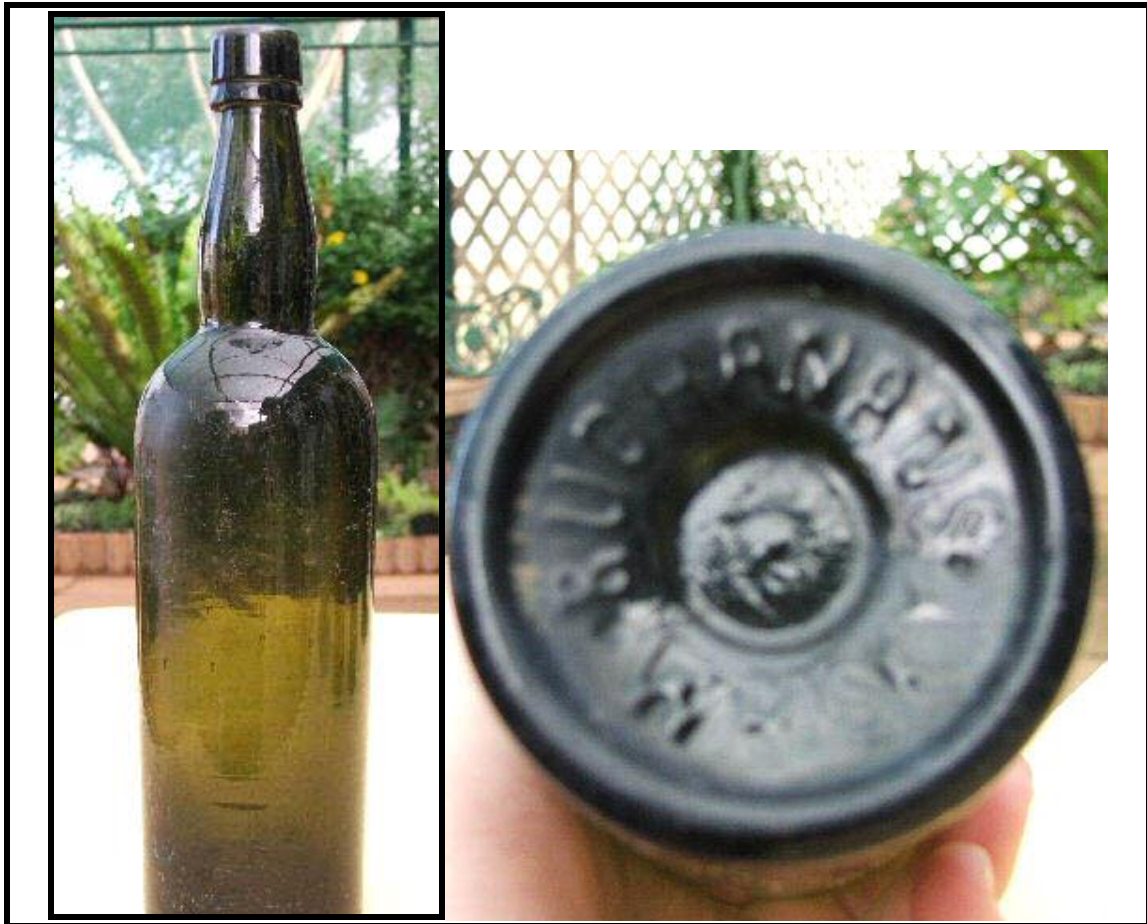
Above left Lion Brewing & Malting Coy bottle. Above right and below are details of Pickle and Chutney jars from Perth Glass Works. The horse shoe trade mark shows up clearly in the photograph below.





Above left Mallee Brand Eucalypti Syrup. On the base is an X. The bottle label also gives the information that this syrup would cure a number of complaints including quinsy. For two shillings one could buy a dozen bottles. This bottle is around 60 years old. In the centre is a bottle made in Japan. The cork is in the neck. On the right is Kwit foaming detergent dishwashing concentrate. It is one imperial pint. Below Left is a Skipping Girl Vinegar bottle. Next to it is an early Holbrook bottle with J on the base. On the right is a Sharpe Bros demijohn ceramic jar.





Above Buchanan Whiskey



Above is a series of poison bottles.



Information from the owner – L-R

- A. Olive green Resch's beer embossed *RESCH'S LIMITED SYDNEY*... On the base is a triangle mark. Height 303mm.
- B. Amber Queensland beer embossed *This is the property of the Brisbane Bottle Exchange Pty Coy Ltd* near the base and *BBE Queensland* with spectacle trademark near the shoulder. Stands approximately 295 mm in height...
- C. Olive green two piece mould applied top skittle. Larger size standing approximately 268 mm in height...
- D. Black glass beer/ale. Made from a three piece mould with an applied cork stoppered top. Dates from c1880-1900. Stands approximately 220 mm in height...
- E. Black three piece mould applied top beer...Dates from c1890s. Stands approximately 210mm in height...



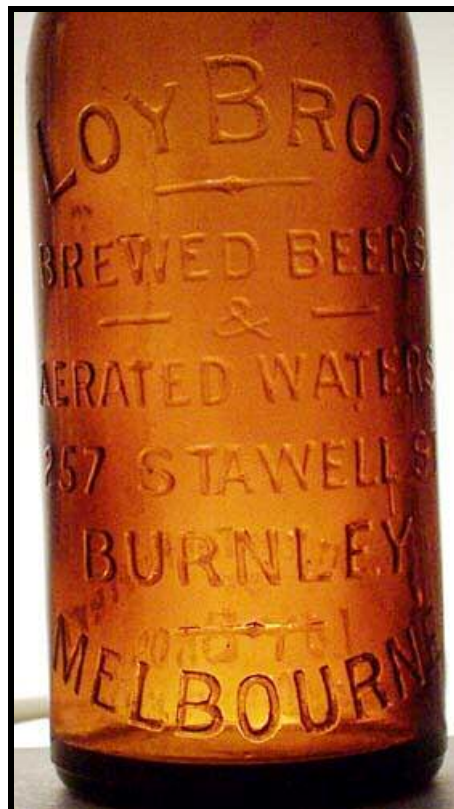
Above is a Schweppes bottle 28cm in height.

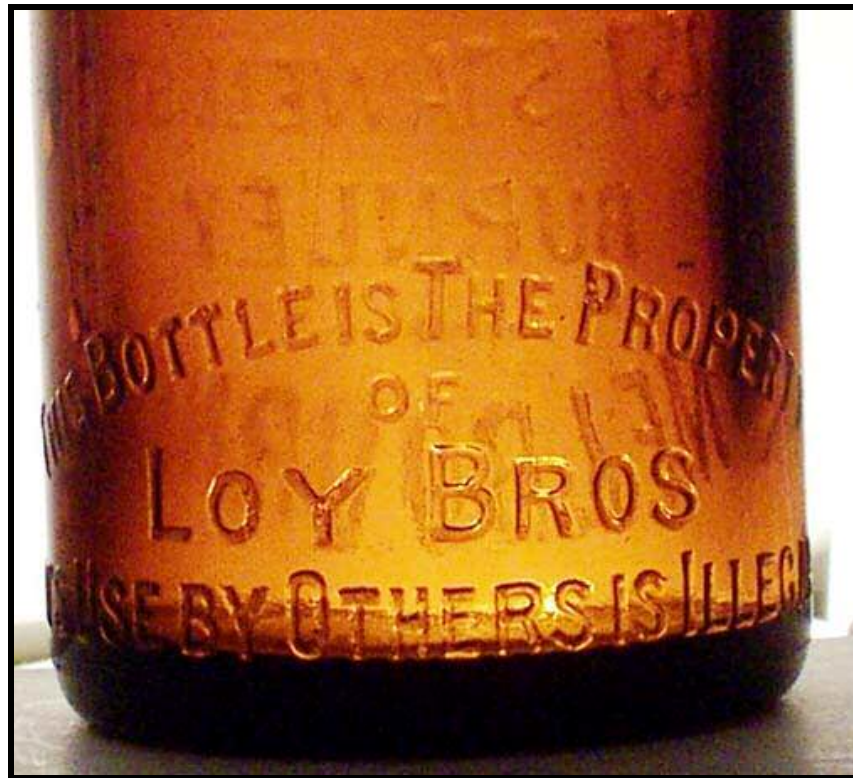
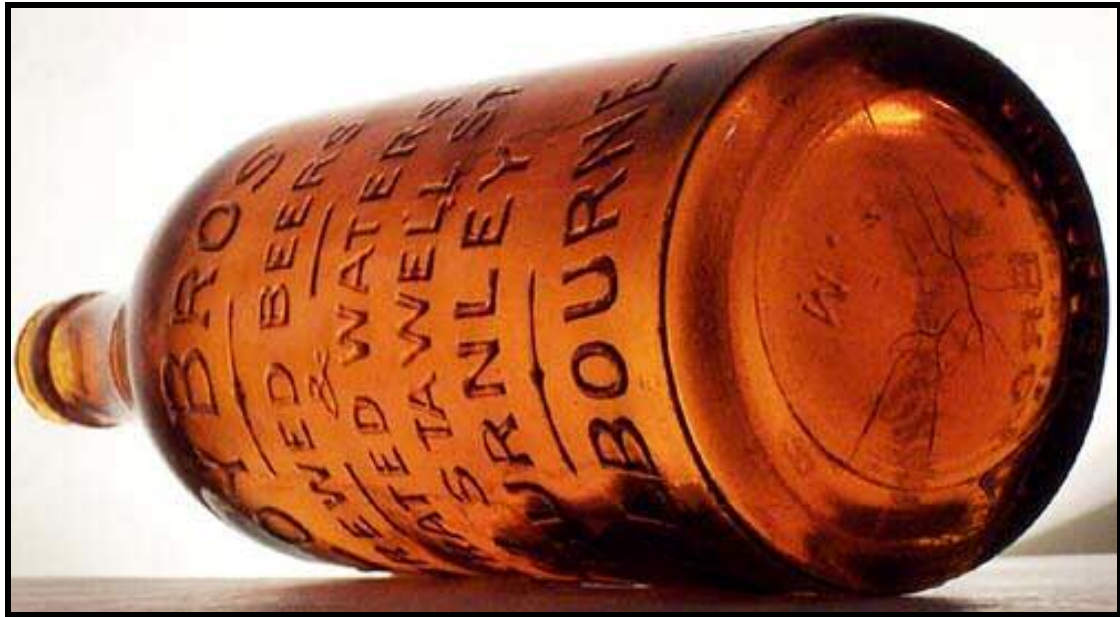


Above left Castor Oil bottle. Center Schweppes blob top bottle and right Evergreen Eucalyptus Oil Extract bottle. The latter bottle has on the base *F15* with the *F* back to front and upsidedown; *L36* and another mark hard to read. The front of the bottle is round and the back is half a hexagon. The bottle is 14cm in height. The lid is metal.



Above left *John Sutherland & Sons – Melbourne Pickles*. Stands approximately 10 inches tall. On the right is *Floral Perfumes POPPY H Clarkson Chemist 421 Sydney Road Brunswick 882 Sydney Road Moreland*. It is approximately 3.75 inches tall. The next two photographs show *Loy Bros Brewed Beer & Aerated Waters bottle*.







Enjoy A Carnival Cold Drink 24 fl oz. On the back This bottle remains the property of Brough Bros Pty Ltd Unanderra Please return empty bottles promptly. Crown seal AGM (skirt) on base; 26cm height.

Centre: Delightful LOY'S 24fl oz DELIVERED. This bottle remains the property of Telsco Bottle Co Pty Ltd. ARTIFICIALLY COLOURED PRESERVATIVES ADDED RETURN REFILL. The bottle also has Loy on both shoulders. Crown seal 26.5 cm tall.

Right: SAPPHIRE CORDIALS BEGA. AGM (skirt) on base. Crown seal. 20.2 cm height.



Above are two Old Kedge Rum bottles.



The Western Preserving Works Perth WA Bottle, Sovereign band. Below two perfume bottles. Ones similar to the one on the left have been found in Stirling Park.





Above and below perfume bottles.



Below are perfume bottles found in Stirling Park.





Top row assorted scent bottles. The first on the left in the top right photograph has *E RIMMEL* embossed on the bottle. Several have AGM on the base and they vary in height from 10cm to 5.75 cm.



Above L-R: Apothecary chemist bottle 18cm height; crown seal lemonade 7 oz – 19.3cm; *Dexsal Reg Trade Mark* AGM on base – champhered corners rolled lip 16.3 cm tall; Oval shaped bottle *WELL COME CHEM WORKS* – 2 piece mould; small bottle.



Above two Rosella Brand Bottles and below Lackersteens Chutney. Down one side *LACKERSTEEN SYDNEY* - light *TRADE MARK ALL* 9.5 cm X 5.75 cm.



Above right Wolfe's Aromatic Schnapps. On the right is a tall green crown seal Resch's Ltd Sydney bottle. 34cm tall and 7.5cm across the base. On the next page is a photograph of the base of the bottle.



Above – detail of clear pick-axe bottle. It dates around 1900 and has a hand applied lip in the early ring seal corker style. Height around 12 inches.



Above right is a White Horse Scotch Whisky bottle with label.





Above rum and gin bottles c1920s – below Warner's Safe Cur, Kidney & Liver and *TOOHEY Ltd* internal thread – Vance & Ross c1910.



A FEW MORE BOTTLES FROM E-BAY.



Above left – black bottle Guinness Stout and centre a Sharpe’s demijohn with unusual blue top. (e-Bay). On the right is an assortment of rum and gin bottles. Below are two e-Bay beer bottles -Pick-Axe right and Reschs.



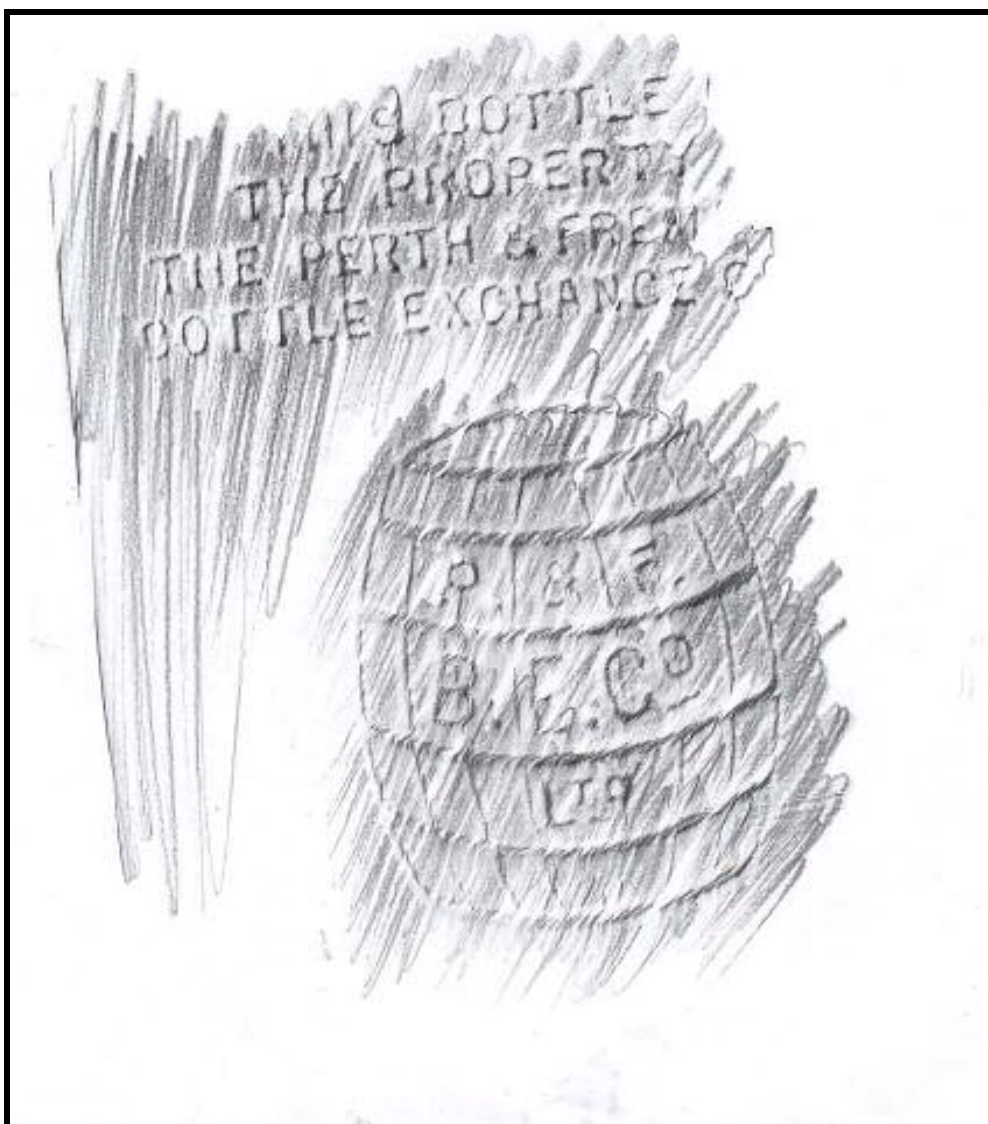
ADDITIONAL BOTTLES FROM MY COLLECTION



Above are five bottles bought on 30th June 2005. From left to right they are Beer bottle brown green colour *Perth & Freemantle Bottle Exchange Co Ltd*. It is 29 cm tall; blue bottle with *EMERSON DRUG CO BROMO-SELTZER* around the heel. On the base is *M* in a circle and either a 9 or 6; *THIS BOTTLE IS THE PROPERTY OF THE CONDIMENT BOTTLE COMPANY LTS MADE IN AUSTRALIA 1923*. It is 16cm in height; 6 cm across the base which has *AGM* on it and across the top it is 4.5 cm; *CHAMPION'S VINEGAR* with 165 on the base. The height is 36.5 cm. The top of the bottle is hand turned; *THIS BOTTLE REAMIS ALWAYS THE PROPERTY OF JOHN CAUSEY & CO LTD SYDNEY & BRISBANE ITS USE BY OTHERS IS ILLEGAL... JOHN CAUSEY & CO LTS REGd No 3340*. On the base is *AGM* and the year 1922. It is 28 centimetres in height and 7 cm across the base.

Below is a photograph of the base of the Perth & Freemantle Bottle Exchange Co Ltd beer bottle. On the next photograph is a side view of the bottle and following is a rubbing from the front of the bottle.

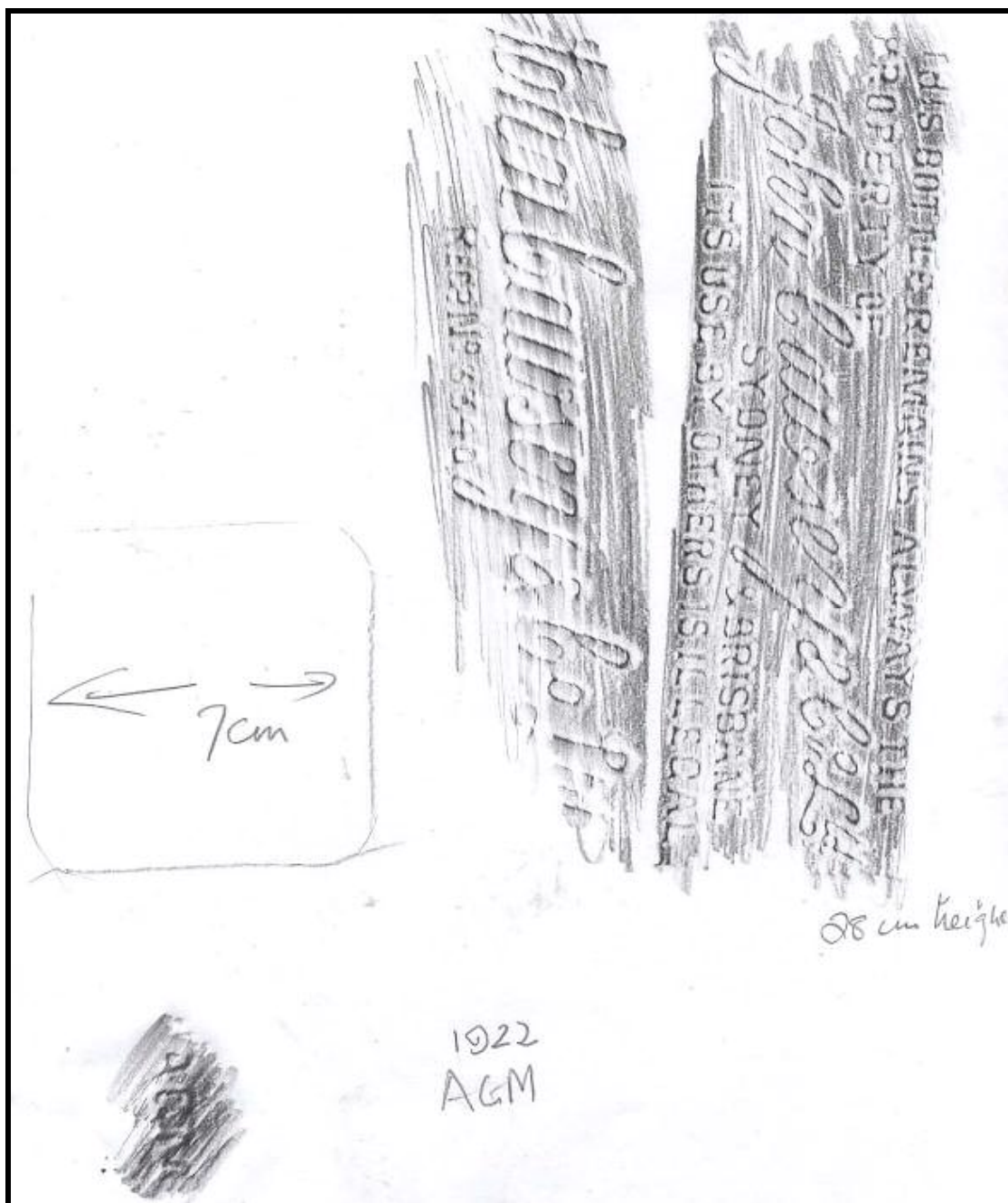




Below is a detail of one side of the John Causey Bottle.



The following rubbing shows two sides of the above bottle that is embossed.



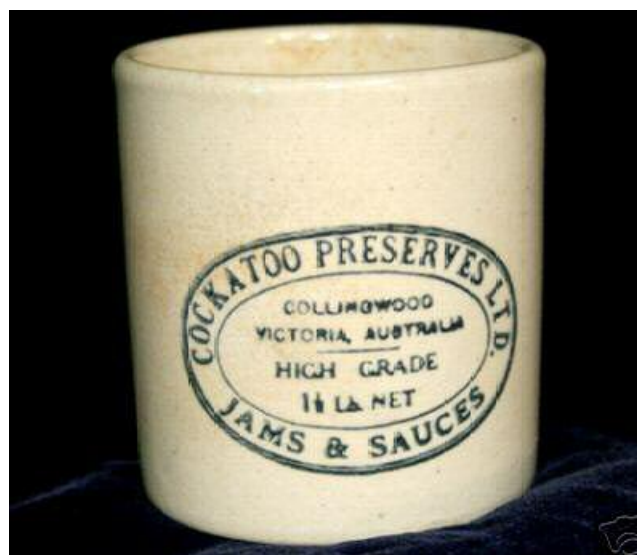


Above is a photograph of the base of the bottle and below another view showing the top that is hand turned.



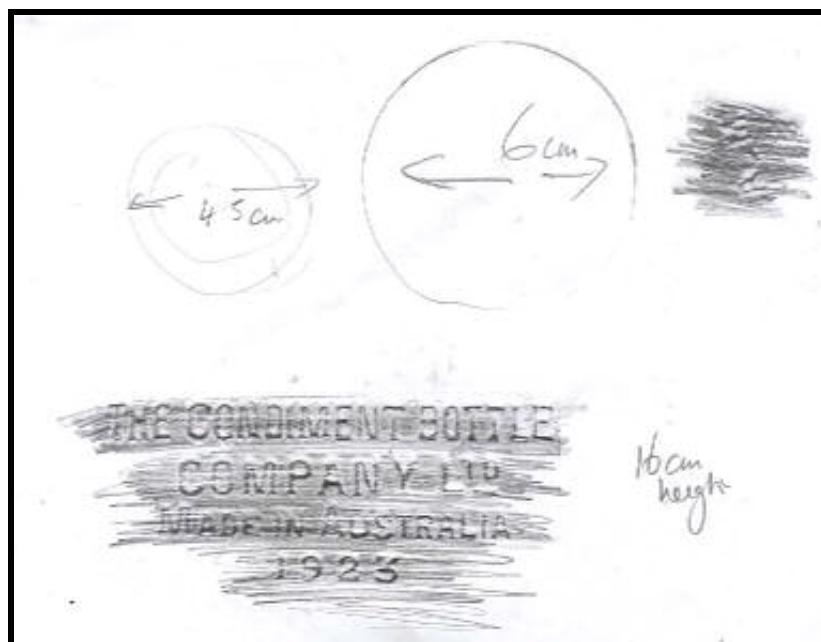


Above right is a detail of the John Causey bottle. On the left is a detail of the Vinegar bottle. Below is a ceramic jam container.





Above left is the blue Emerson Drug Company Bottle. On the right is the Condiment Bottle Co Ltd Bottle.



Below is the Tutti Frutti bottle orange flavour base. The full label reads – *BIG SISTER 6FL Oz (110 ML) TUTTI FRUITI ORANGE FLAVOURED CORDIAL BASE BLENDED FROM FRUIT JUICE, CITRIC ACID, NATURAL GUMS, NATURAL FLAVOURS, PERMITTED COLOURS, PRESERVATIVES, SODIUM METABYSULPHATE, SODIUM BENZOATE. DIRECTIONS DISSOLVE 5 CUPS SUGAR IN 6 CUPS HOT WATER...MIX IN CONTENTS, POUR INTO CLEAN BOTTLES AND CORK. ARTIFICIALLY COLOURED – PRESERVATIVES ADDED... FOOD LTS, SYDNEY, AUSTRALIA 683D.* On the base is AGM in the skirt IS 1954 7.





Above is a detail of the vinegar bottle with the trade mark of a man on a rearing horse. It is only just discernable. Below is a detail of a bottle with 1941 AGM on the base.





Above left is a full photograph of the bottle with 1941 on the base. It is clear light green in colour. On the right above is a Bushell's Coffee Jar (1940s) Below is a detail of the clear light green bottle shown above.

