

## ADDITIONAL INFORMATION

### **AGM – Australian Glass Manufacturers**

My research work and interest is in the period between 1920-1965. I concentrated on the time of the camps and Howie's settlement – 1922-1930. During this period the letters, AGM – either in a straight line or curved line are used and found on the base of bottles. AGM monogram form is used between 1915/16 and 1922/23 – it too is found on the base of the bottles. From around 1917 up until 1922/1923 the NSW Bottle Company embossed the front of bottles with their name and a year. During the early 1920s there is an overlap of year dating on the bottles with some of their bottles having the AGM and year embossed on the base instead of on the front of the bottles.

The following information concentrates on the period 1930-1969 when AGM with skirt was used. With the exception of 1969 the AGM with skirt appears on the base of the bottle. In some cases the embossed information on the base is very clear – at other times it is light and details such as the numbers are hard to read.

Below is a rubbing of the NSW Bottle Co Pty Ltd 1969 beer bottle with embossing on the heel. Below it is a rubbing taken from the base of the bottle showing the circle of dots on the base. Information from another collector tells of a 1970 bottle with AGM with skirt on the heel.

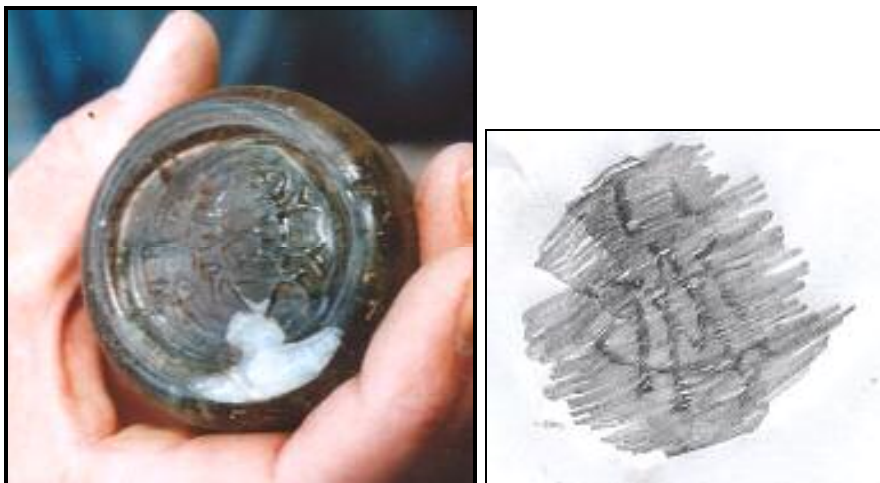


Since finding the above example I have come across a number of similar ones with the AGM with skirt on the heel and on the shoulder of bottles.





Above left is an example of a 1920s AGM on base of beer bottle and on the right 1941 AGM with skirt beer bottle base. Below is an example of the use of the monogram AGM – base found on Capital Hill and on the right a rubbing of a monogram bottle base. This AGM was in use between 1915/16- 1922/1923 and is relatively rare.





The following NSW Bottle Company Bottles made by AGM have the following information on them:

Unless otherwise mentioned the information is on the base of the bottles.

---

**NSW BOTTLE COMPANY  
BOTTLES – Beer bottles – majority  
brown glass with crown openings.**

**The majority of these bottles from 1917 (and perhaps earlier) up until and including 1923 have the year on the lower section of the body of each bottle. Some year dates that include 1923 are found on the base. The letters AGM either in a straight line or curved line on the base date from c1923 up until 1930 (or 32). The AGM with skirt is used from around 1931 until 1968. A single 1969 AGM with skirt NSW Bottle Co Pty Ltd bottle has been found with the year and AGM with skirt on the shoulder of the bottle.**

**A few Zetland Glass Bottle Works that were made for NSW Bottle Co Ltd have been found. A number of bottles with the AGM monogram have been found but none so far that were produced for the NSW Bottle Co Pty Ltd.**

**The following NSW Bottle Co Pty Ltd bottles are from my collection and details of the AGM are noted in the following list.**

1917 NSW BOTTLE CO on front.  
Base has recessed area with 1,1, O,M  
on base. M probably means  
Melbourne and predates AGM.  
1921 NSW BOTTLE CO on front  
nothing on base.  
No date AGM skirt ISMI 13  
1932 AGM skirt S 98  
1934 AGM skirt S 981  
1935 AGM skirt U 745  
1938 AGM skirt U 745

1941 AGM skirt IS 71  
1943 AGM skirt 745  
1944 AGM skirt S 891  
1944 AGM skirt S 981 3 clear glass.  
1946 AGM skirt IS 89  
1946 AGM skirt IS 89  
1951 AGM skirt IS 89 8 or 5  
1951 AGM skirt IS 89 13  
1952 AGM skirt IS 89 23  
1953 AGM skirt IS 89 3  
1954 AGM skirt IS 89 12  
1954 AGM skirt 39  
1955 AGM skirt IS 89 L S14 (or 514)  
1955 AGM skirt IS 891 S24 (or 524)  
1955 AGM skirt IS 89 18  
1956 AGM skirt IS 89 572  
1956 AGM skirt IS 89 572  
1956 AGM skirt IS 89 519 (?)  
1956 AGM skirt IS 89 L 522  
1957 AGM skirt IS 89 712  
1958 AGM skirt IS 89 145  
1959 AGM skirt IS 89 874  
1959 AGM skirt IS 89 862  
1960 AGM skirt IS 89 656  
1961 AGM skirt IS 89 20  
1961 AGM skirt IS 89 20 (or 90)  
1961 AGM skirt IS 89 549  
1962 AGM skirt IS 89 18  
1963 AGM skirt RI 36  
1965 AGM skirt RI 24  
1965 AGM skirt IS 89 45  
1968 AGM skirt IS 89 46  
1969 AGM skirt IS 89 D 2 NSW  
BOTTLE CO PTY LTD around heel.  
This bottle also has the dots around the  
perimeter of the base.  
1970 as above

I make the following assumption – The AGM with skirt was in use from 1932 if not earlier – that is c 1930 as mentioned in some documents. It continues until 1969. The AGM with skirt is on the base of the bottles until



1969 when it appears on the heel of one bottle with year and another without the year. Both have the dots around the perimeter of the base. The second bottle without year is a Manufacturers Bottle Co-operative of Victoria.

The letters S and U appear on the bases of 1930s bottles – there may be other letters? IS on base commences around 1941 and continues through to at least 1968.

Other Bottles That I own that have AGM on base.

RESCH'S AGM S795

RESCH'S AGM 22 S 562

RESCH'S (broken in dump that dates 1922-1925) AGM S 795

RESCH'S (as above) AGM just readable.

CAPITAL CORDIAL COMPANY  
AGM skirt BA

CITY BOTTLE CO SYDNEY AGM  
skirt F 1400 GM

CITY BOTTLE CO SYDNEY B 1949  
McWILLIAM'S WINES AGM skirt N  
1S 618

ADELAIDE BOTTLE CO-  
OPERATIVE COMPANY LTD  
SOUTHWARK pick-axe trade mark in  
circle on the heel AGM 17 A287  
ADELAIDE BOTTLE CO-  
OPERATIVE COMPANY LIMITED  
SOUTHWARK. This has PX in large  
letters on the base. The pick-axe motif  
in circle is on the shoulder.



Another bottle has AGM 165 M on base.

Clear glass bottle large has AGM skirt  
A 1509 A62 on base.

OT small bottle M789 AGM M 4

Small OT OT bottle AGM S 14 (?) 0 9

Large rectangular OT clear 1920 on  
base.

Clear sauce bottle rectangular shaped  
body. Base - AGM skirt top centre -  
below centre line S on one side and 8  
on the other. Bottom centre 21340.

Around the heel is embossed – *THIS  
BOTTLE ALWAYS REMAINS THE  
PROPERTY OF CEREBOS (AUS)  
LTD.*

RICHMOND NS BREWING CO PTY  
LTD with embossed tiger on shoulder  
of the bottle has on the base K44 with  
a 1 on one side and 2 on the other and  
below M and AGM with skirt.

SCHWEPPE'S large clear cordial bottle  
AGM skirt IS845 2.

THE WEST AUSTRALIAN GLASS  
MANUFACTURERS has a triangle on  
base with a letter that looks like a  
capital R reversed within it. 1923 also  
embossed on base. This company was  
taken over in 1926 by AGM.

CAPITAL CORDIAL COMPANY  
(soft drink bottle clear glass) AH 259.



NSW BOTTLE COMPANY MADE  
IN AUSTRALIA - ZGBW Ltd on  
base.

HAMILTONS EWEL has O on base

HOOLBROOK clear bottles – one  
small and another large have  
VULCAN on base. I have other  
examples with P and another with J on  
the base.

Yet to be fully documented are the  
other bottles that I have found – the  
majority of which are AGM in the  
straight or curved line.



Above & below – Holbrook Sauce  
Bottle with AGM on base.



The next series of bases show bottles  
manufactured by firms other than  
AGM.



The small brown glass jar has AGM on  
base.











Above and below Pick-Me-Up bottle 1958.







Above Capital Cordial Company Bottle (Canberra). Below Sheekey cordial & pick-me-up brown glass bottle.







The next three photographs show the Harbottlealsop rum bottle broken -

Next photograph – Federal Distillery bottle base.





Above ZGBW base and below star on base.



Above example of dots around the perimeter of the base – 1969 or later? This form of embossing is on a lot of non returnable bottles. The use of the dots used in 1969 (no earlier examples found by me – may be earlier examples?) to present day.







Above Imperial quart base



beer bottle bases above and below.

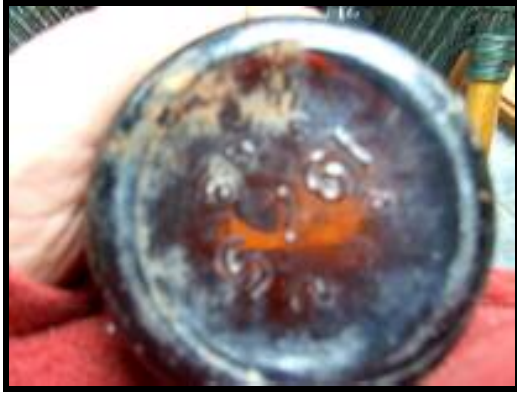


1922 beer base



AGM





1941 (vinegar or cordial?)



1938 beer







Below group of bottle bases.



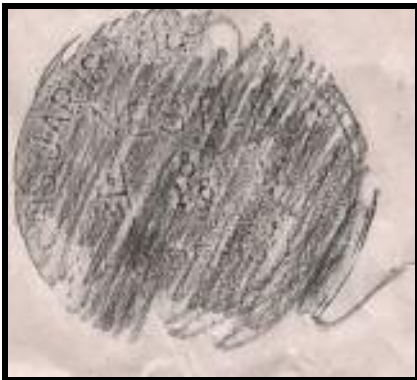




Above is a bottle with rusted lid found in one of the Westlake dumps. The bottle on the right is one of the recycled beer bottles not refilled. Below are rubbings from a Nestle jar found on Block 1, Section 128 Stirling Park. It is one of two found inserted into the ground with white quartz placed near them (grave furniture?).



Nestle jar



The glass jar, like the following bottle, were removed and replaced following the information of the find being given to the NCA and Heritage Department



in 2003. I photographed them following their disturbance. These bottles are probably 1950s-1960s.

The next series of photographs are Telsco Bottles that may have been used by Schweppes Cordial. I have found another bottle – same brand Telsco - in the area of the Westlake cottages in *The Gap*.



Below is another bottle set into the ground in the area of Block 1, Section 128 Stirling Park Yarralumla. There are four examples of bottles set into the ground with stone arrangements in this section of the park.

The bottle below was removed from its bed of soil by person unknown. It has the contents in ml indicating that it is post the change into metric.







Above is another bottle that was found in the area of the park using ml measurement. It has on the shoulder 370 ML and AGM with skirt followed by 14260 5 8 76 DO NOT LITTER DISPOSE OF PROPERLY.

Below are details of a Telsco bottle that was probably used by Schweppes – note the cap. This bottle would be post World War 2 – sometime between 1950-1970. This bottle has on the heel 19 THIS BOTTLE REMAINS THE PROPERTY OF TELSCO BOTTLE CO PTY LTD. This is followed by a square 77 0 and a mark that looks like and L with the upright at a 45degree angle.







Above and below non refillable recycled beer bottle. Compared to the 1920s, 1930s and earlier bottles, this bottle is light in weight.



The above bottle has *RECYCLABLE* on the heel.





Above and below details of the recycled beer bottle.



Next is the base of the small beer bottle. These bottles are from memory from the 1970s or 80s period? I have two of these bottles. One has AGM with skirt on the heel and the words *RECYCLABLE NOT TO BE REFILLED*. The other bottle has the same lettering but no AGM mark.



The next series of photographs are of a 370 ml bottle.







The next photograph shows the embossed heel of this bottle.



Above photograph of beer bottles and a large coca-cola bottle.



Previous photograph detail of CUB trademark. This bottle has on the heel AGM skirt, *M*, and the lettering *THIS BOTTLE ALWAYS REMAINS THE PROPERTY OF THE MANUFACTURERS BOTTLE CO OF VICTORIA PTY LTD.* The letter *M* probably means that the bottle was produced in Melbourne. I have another similar bottle – without the AGM mark.

The next photograph shows the heel of the bottle shown above with the AGM with skirt mark on the heel.







Dinner Ale 1985 – e-Bay.



Above beer bottle and below is the base of that bottle that has AGM with skirt, ISM, 17 on the base.







Above - e-Bay bottle - WA or Qld?



Old Perth Sovereign brand



Above a Kia-Ora bottle that has on the heel – *NOT TO BE REFILLED KIA-ORA*. On the base is AGM with skirt in the top section – midway down on either side of base is 18 and M and bottom centre – 1204. Below is a detail of the base.



The screw top is metal and has just discernable on it the word – *KIA-ORA*.







Above is the Kia-Ora bottle (foreground) with the Schweppes Telsco bottle behind it. On the left is a bottle – contents unknown. Below is the heel of the Kia-Ora bottle.



Above left is the Kia-Ora bottle – centre is a Bega Co-operative Society Ltd bottle and right the small beer bottle.



The next two photographs show the heel on the clear Schweppes Telsco bottle shown above.







Above is a wine bottle. Below is a photograph of the base of the bottle.



Above and below details of the base of a bottle found in one of the Stirling Park dumps. The lettering around the base is difficult to read but in parts reads – PCG Bottle Vio... Glass England.





The following photographs were taken at *Down Memory Lane* Fyshwick ACT with the permission of the owner of the store.



The above is a Hall's Wine bottle.













Not included in the above group is a blue Johnnie Walker Whiskey bottle that has a date of 1913 on the base.